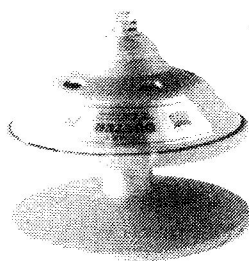
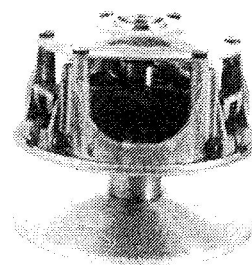


**O  
D  
Y  
S  
S  
E  
Y**



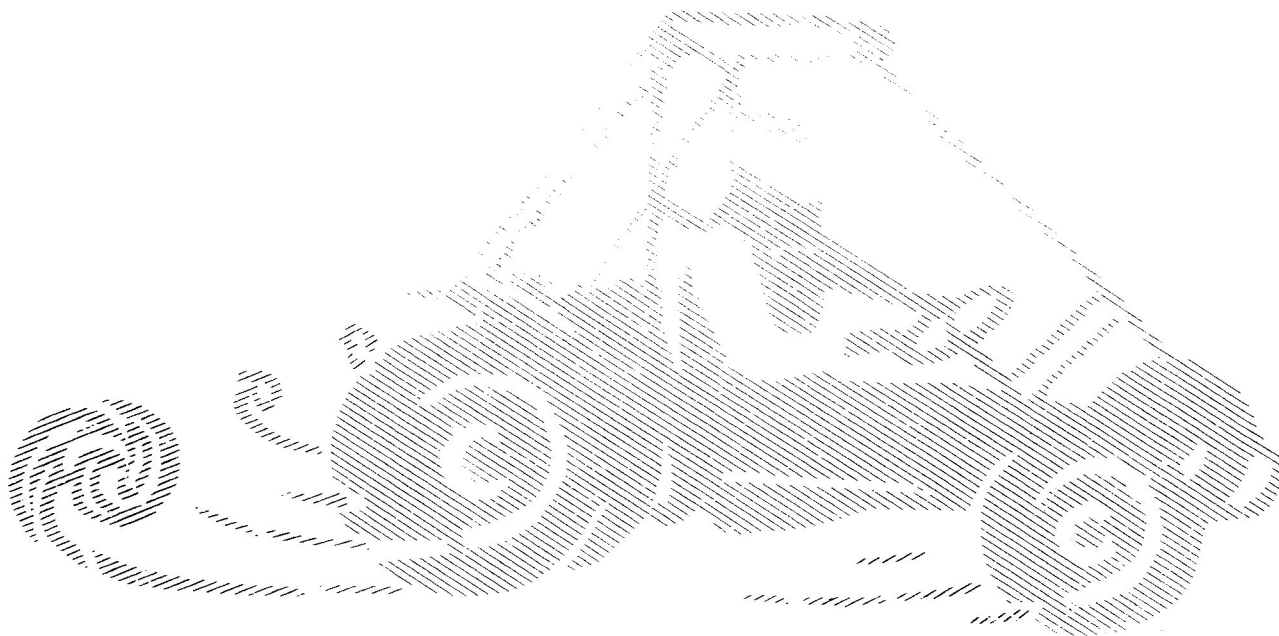
**94C**



**102C**

***FOR FL-250***

***AND FL-350***



***REPLACEMENT KITS  
FOR STOCK  
TRANSMISSIONS***

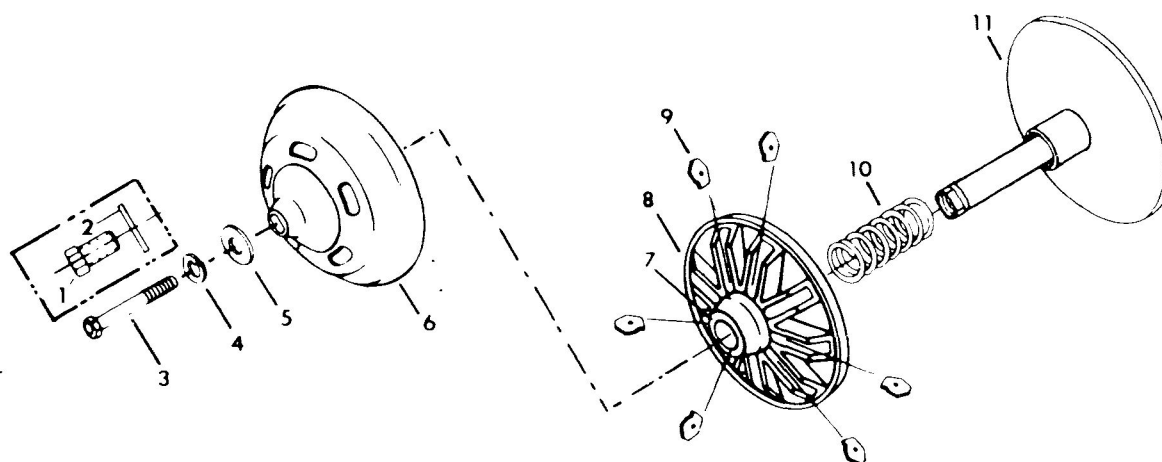
# COMET DRIVE SYSTEM CONVERSIONS FOR THE HONDA ODYSSEY

Dictionaries define the word "odyssey" as an extended wandering adventurous trip. Get a REAL trip with either of these COMET/Odyssey conversion kits. SIMPLE and RUGGED construction that lasts and lasts with EFFICIENT peak performance built in . . . SMOOTH shifting action that lays all your available horsepower to the ground where it ought to be! That's why we can say "you're in for a real TRIP!" when you mount your Odyssey with one of our conversion kits. Put a COMET on it and add some adventure to your wanderings!

## 94C CLUTCH — 90D DRIVEN KIT NO. 209187A — 1-1/4" Wide Belt FL-250 ONLY

This system completely converts your original torque converter drive system and features simplicity, ruggedness and lasting performance. This is a great system for the occasional racer and the person weary of constant drive system maintenance and expense.

All components of this conversion kit are ready to "bolt on". Kit includes 94C-209234A drive clutch, 209451A belt and 90D-212371A driven "T.C." (readily accepts transfer of Odyssey brake disc). 94C calibration: 6 pucks - 206143A and white spring - 205820A.



### PARTS LIST

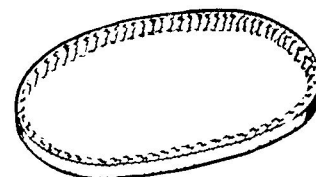
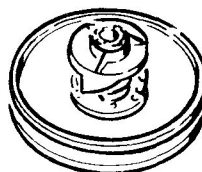
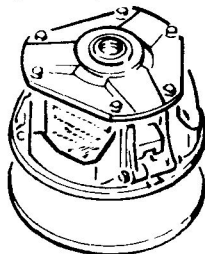
**FOR FL250 ODYSSEY**  
94C - 209234A CLUTCH ONLY  
CALIBRATION: 6 pucks - 206143A  
and white spring - 205820A  
APPROX. ENGAGEMENT 4600 RPMS.

**FOR FL350 ODYSSEY**  
94C - 206094A CLUTCH ONLY  
REPLACEMENT 206094A FOR FL350  
ORIGINAL ODYSSEY DRIVE CLUTCH  
CALIBRATION: 6 pucks - 205918A  
and orange spring - 205583A  
APPROX. ENGAGEMENT 3100 RPMS.

ITEM #	ORDER #	DESCRIPTION	QTY. REQ.	ITEM #	ORDER #	DESCRIPTION	QTY. REQ.
1	205747A	Puller Bolt (9/16-18 x 1")	1	1	205747A	Puller Bolt (9/16-18 x 1")	1
2	205748A	Flat Washer — For Puller Bolt	1	2	205748A	Flat Washer — For Puller Bolt	1
2 A	206189A	Puller Bolt & Washer Kit	1	2 A	206189A	Puller Bolt & Washer Kit	1
3	209258A	Mounting Bolt (7/16-20 x 4 1/4")	1	3	205591A	Mounting Bolt	1
4	205761A	Lock Washer — For Mounting Bolt	1	4	205761A	Lock Washer — For Mounting Bolt	1
5	205746A	Flat Washer — For Mounting Bolt	1	5	205746A	Flat Washer — For Mounting Bolt	1
6	205760A	Steel Cover	1	6	205760A	Steel Cover	1
7	205561A	Upper Guide Bushing	1	7	205561A	Upper Guide Bushing	1
8	205764A	Moveable Face w/Upper & Lower Guide Bushings	1	8	205764A	Moveable Face w/Upper & Lower Guide Bushings	1
9	206143A	Activator Puck	6	9	205918A	Activator Puck	6
10	205820A	Spring, White	1	10	205583A	Spring, Orange	1
11	209235A	Fixed Face/Stem, 30MM Tapered "Deep" Bore	1	11	205716A	Fixed Face w/Stem #205580A	1

### FOR 250 ODYSSEY ONLY

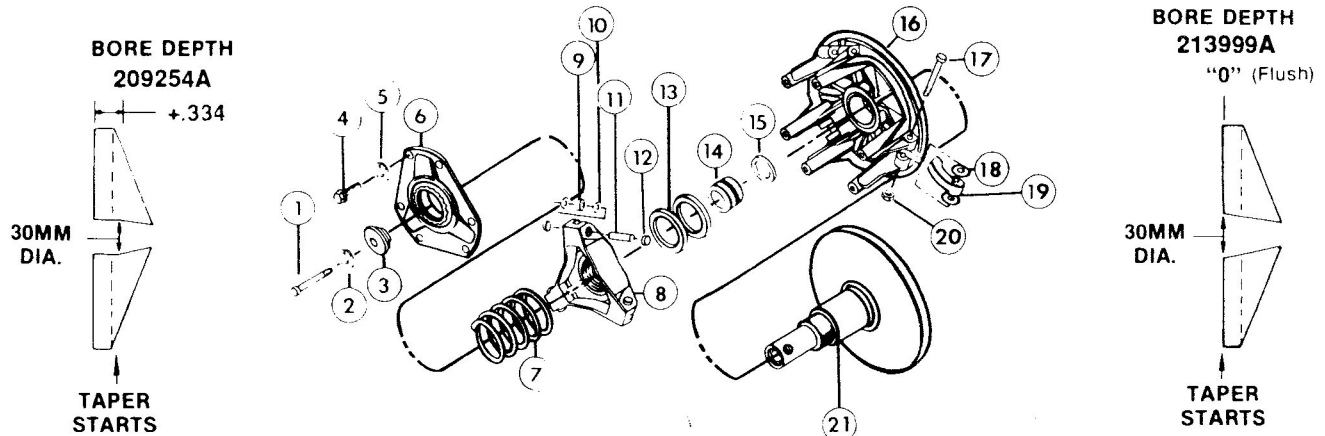
A complete conversion kit. Including a 94C or 102C driver — 90D driven and belt. All components of this kit are ready to "BOLT ON." Readily accepts transfer of odyssey brake disc on driven unit. See back page for parts list on driven unit.



**102C CLUTCH — 90D DRIVEN**  
**KIT NO. 209257A — 1-1/4" Wide Belt**  
**FL-250 ONLY**

In addition to many of the 94C DUSTER's advantages, the 102C features unique ability for fine-tuning to your machine's performance requirements that is unmatched by any other equipment on the market today. Dozens of "mod parts" are offered to adapt your shift pattern to the engine's power band. We call the 102C our "programmable" clutch. The 102C high-performance kit is suggested for the Odyssey with extensively modified/tuned engine . . . for all types of racing.

All components of this conversion kit are ready to "bolt on". Kit includes 102C-209254A drive clutch, 209451A belt and 90D-212371A driven "T.C." (readily accepts transfer of Odyssey brake disc). 102C calibration: 208968A C-2 arms and white spring - 203474A.



**PARTS LIST**

**FOR FL250 ODYSSEY**

**102C - 209254A DRIVE CLUTCH**  
**CALIBRATION: C-2 208968A Arms**  
**203474A White Spring**  
**APPROX. ENGAGEMENT 3700 RPMs**  
**FOR 1-1/4" Belt**

**FOR FL350 ODYSSEY**

**102C - 213999A DRIVE CLUTCH**  
**REPLACEMENT FOR ORIGINAL ODYSSEY CLUTCH**  
**CALIBRATION: N-1 209642A Arms 203475A Yellow Spring**  
**APPROX. ENGAGEMENT 4600 RPMs**  
**FOR 1-3/16" Belt**

ITEM #	ORDER #	PKG'D IN QTY. OF	DESCRIPTION	MIN. QTY. REQ.	ITEM #	ORDER #	PKG'D IN QTY. OF	DESCRIPTION	MIN. QTY. REQ.
1	(see kit)		Clutch Retaining Bolt (6-1/2" Length)	1	1	(see kit)		Clutch Retaining Bolt (6-1/2" Length)	1
2	205761A	1	Lock Washer for Clutch Retaining Bolt	1	2	205761A	1	Lock Washer for Clutch Retaining Bolt	1
3	202996A	1	Pilot Washer for Clutch Retaining Bolt	1	3	202996A	1	Pilot Washer for Clutch Retaining Bolt	1
4	207296A	6	Cover Plate Retaining Bolt (1-3/4" Length)	6	4	207296A	6	Cover Plate Retaining Bolt (1-3/4" Length)	6
5	200698A	6	Lock Washer for Cover Plate Bolt	6	5	200698A	6	Lock Washer for Cover Plate Bolt	6
6	207120A	1	Cover Plate & Upper Guide Bushing Assembly	1	6	207120A	1	Cover Plate & Upper Guide Bushing Assembly	1
7	203474A	1	Engagement Spring, White	1	7	203475A	1	Engagement Spring, Yellow	1
8	(see kit)		Spider	1	8	(see kit)		Spider	1
9	(see kit)		Roller w/Bushing Insert	3	9	(see kit)		Roller w/Bushing Insert	3
10	207327A	6	Steel Backed Fiber Thrust Washer	6	10	207327A	6	Steel Backed Fiber Thrust Washer	6
11	205200A	3	Polished Axle Pin for Roller	3	11	205200A	3	Polished Axle Pin for Roller	3
12	205432A	6	Contoured Guide Button	6	12	205432A	6	Contoured Guide Button	6
13	203150A	2	Spacer for Spider	2	13	203150A	2	Spacer for Spider	1
**14	(see below)		Lower Guide Bushing for Movable Face	1	14	213265A	1	Lower Guide Bushing for Movable Face w/Ring	1
15	204238A	1	Retaining Ring for Lower Guide Bushing	1	+16	(see kit)		Movable Face Casting	1
*16	(see kit)		Movable Face Casting	1	17	(see kit)		Pivot Bolt for Cam Arm	3
17	(see kit)		Pivot Bolt for Cam Arm	3	18	204203A	6	Steel Washer for Cam Arm	6
18	204203A	6	Steel Washer for Cam Arm	6	19	209642A	3	Cam Arm - Type N-1	3
19	208968A	3	Cam Arm - Type C-2	3	20	207953A	3	Loc Nut, Pivot Bolt	3
20	207953A	3	Loc Nut, Pivot Bolt	3	21	208803A	1	Fixed Face Casting & Stem Assembly	1
21	209255A	1	Fixed Face Casting & Stem Assembly	1					

\* Order numbers listed are packaged in minimum quantity required. You need only to order one of a part no. to receive the amount required (i.e. order 1-205432A and you will receive a package of 6 buttons).

**RETAINING BOLT KIT**

#213887A Includes  
Item No's 1-2

**SPIDER PARTS KIT**

#214920A Includes  
Item No's 9-10-11

**SPIDER ASSEMBLY KIT**

#214917A Includes  
Item No's 8-9-10-11-12  
(was 207757A)

**PIVOT BOLT KIT**

#207869A Includes  
Item No's 17-18-20

**MOVABLE FACE KIT**

+ #208812A Includes  
Item No's 4-5-16  
\*Movable Face Kit  
208801A Includes  
Items 14-15-16

**COVER PLATE BUSHING**

#211286A Includes Upper Guide Bushing and Two Spiral Retaining Rings for those CVR Plates with replaceable Bushings. Staked Bushings require complete Cover Plate Assembly #207120A.

\*\*Up to and including 1985 204280A  
1986 and after 213265A (check inside casting for date)

**NOTE: Pivot bolts are installed in all 102C clutches built from 1983 on. Pivot bolt kit no. 207869A is available for all previous models as well. This kit's sole function is to strengthen the clutch and should not be viewed as a means of "quick-change" of the cam arms. The pivot bolts and cam arms should be inspected for wear after each race or at 100-150 mile intervals, whichever comes first. Failure to follow pivot bolt installation instructions will void warranty.**

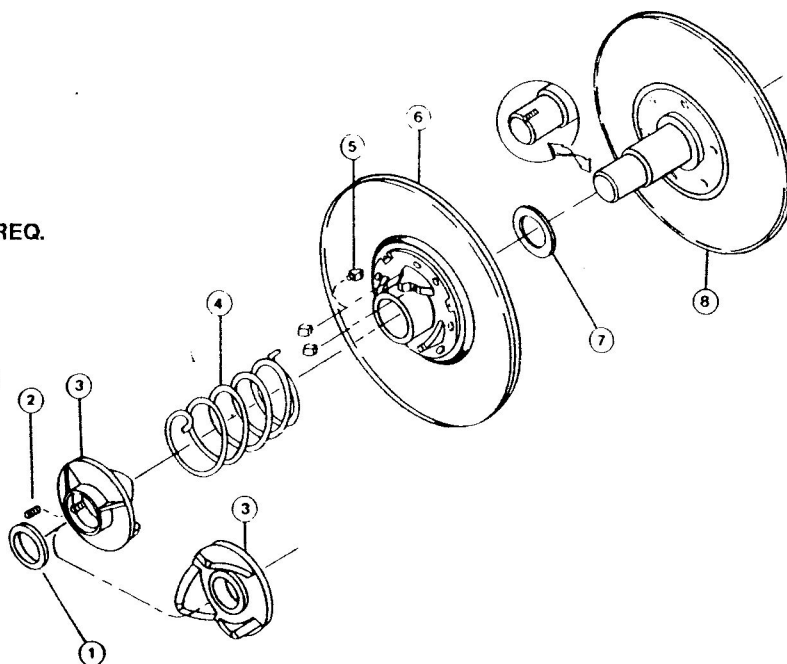


358 N.W. F Street  
(765) 966-8161  
(800) 999-8161

Richmond, IN 47374-2297  
Fax: (765) 935-2346  
<http://www.hoffcocomet.com>

**90D PART NO. 212371A DRIVEN ASSEMBLY  
SEQUENCE AND PARTS LIST**

ITEM #	ORDER #	DESCRIPTION	QTY. REQ.
1	211558A	Washer	1
2	211602A	Set Screw, 5/8-18 x 5/8	1
3	211924A	Cam, Fixed 34°	1
4	212102A	Spring, Brown	1
5	204332A	Button Insert	6
6	212294A	Face, Movable w/Cam	1
7	211561A	Washer, Nylon (1-1/4" Belt Only)	1
8	212474A	Face, Fixed w/Post (3/4" Bore)	1



**FOR FL 250 ONLY**

The 90D driven units are to be used with the 94C or 102C drive units only.

**94 ODYSSEY KIT PART NO. 209187A INCLUDES:**  
94C driven 209234A, 90D driven 212371A, belt 209451A

**102 ODYSSEY KIT PART NO. 209257A INCLUDES:**  
102C driven 209254A, 90D driven 212371A, belt 209451A