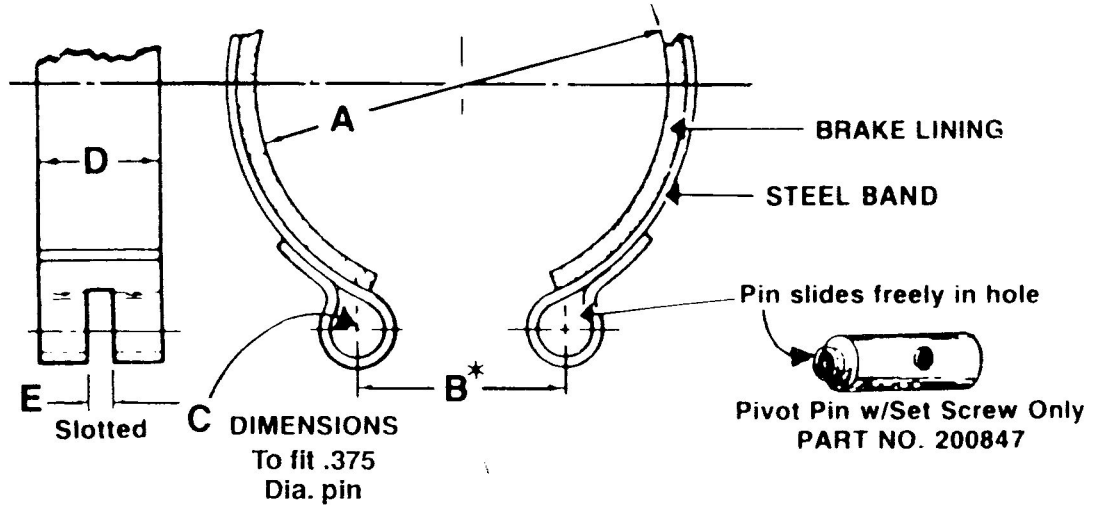


358 N.W. F Street Richmond, IN 47374-2297 (765) 966-8161 Fax: (765) 935-2346
<http://www.hoffcocomet.com>



SPECIFICATIONS							
BAND	INSIDE DIA.	CENTER OF LOOP TO CENTER OF LOOP	LOOP DIA.	BAND WIDTH	SLOT WIDTH	ACTUATION FORCE LBF.	TORQUE IN.-LBF.
ORDER NO.	A	B	C	D	E		
10945A	2.5	1.5	.375	.75	.125 SLOT	10.08	157.32
10987A	3.75	1.375	.375	.75	.156 SLOT	12.85	358.22
10978A	4.203	1.51	.375	1.0	.125 SLOT	24.8	1050.0
	4.31	1.87	.375	1.0	.125 SLOT	33.23	1090.68
10951A	4.0	1.5	.375	1.0	.125 SLOT	16.85	546.29
	4.203	2.74	.375	1.0	.125 SLOT	17.2	603.0
202127A	4.69	1.5	.375	.87	.125 SLOT	15.81	659.87
203234A	6.0	2.0	.375	1.0	.125 SLOT	23.38	1234.84

PIVOT PIN W/SET SCREW ONLY
200847A

DISC AND HUB

ORDER NO.	DESCRIPTION
212369A	6.375 Dia., 1.0 Bore, .25 Keyway w/Set Screw
212364A	7.87 Dia., 1.0 Bore, .25 Keyway
212396A	10.0 Dia., 1.0 Bore, .25 Keyway w/Set Screw

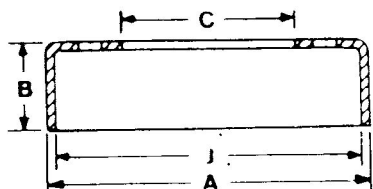
BRAKE DRUMS

The illustrations and specifications shown on this sheet cover a wide range of brake drum sizes and shapes for a multiple of uses. Drums are stamped steel. Other sizes may be available upon request.

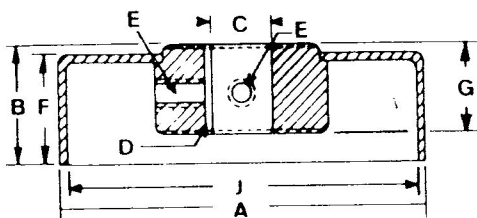
The drums are shown in profile for ease of dimensions and identification. The A-B-C method of identifying diameter, dimension and holes will provide a quick, positive reference for replacement selection or designing of new applications.

*Tapped holes are shown as 2 of 5/16-24 etc. indicating the drum has two set screw holes .3125 diameter with a thread size of 24 threads per inch. THESE HOLES ARE LOCATED IN A RELATIONSHIP OF 90° TO EACH OTHER UNLESS OTHERWISE SPECIFIED.

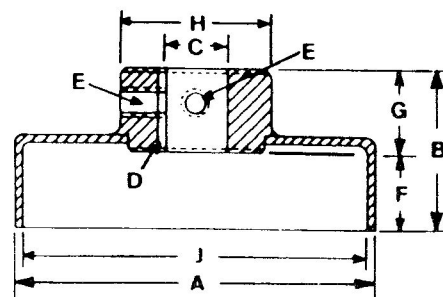
STYLE 1



STYLE 2



STYLE 3



STYLE 1 - No Hub

SPECIFICATIONS

ORDER NO.	OUTSIDE DIA. A	WIDTH* B	CENTER HOLE DIA. C	KEYWAY D	SET SCREW HOLE *E	WIDTH F	HUB WIDTH G	HUB DIA. H	INSIDE DIA. J
200022A	4.203	1.125	1.125	---	---	---	---	---	4.0
200023A	4.203	1.125	1.0	---	---	---	---	---	4.0

STYLE 2 - Internal Hub

SPECIFICATIONS

ORDER NO.	CUTSIDE DIA. A	WIDTH B	CENTER HOLE DIA. C	KEYWAY D	SET SCREW HOLE *E	WIDTH F	HUB WIDTH G	HUB DIA. H	INSIDE DIA. J
10962A	4.203	1.125	1.0	.1875	2 of 5/16-24	1.125	.87	---	4.0
202163A	4.203	1.1875	.625	.1875	2 of 5/16-24	1.125	.5625	---	4.0
206821A	4.203	1.125	1.0	.25	2 of 5/16-24	1.0	.87	---	4.0
203938A	6.0	1.5625	1.0	.25	2 of 5/16-24	1.5625	.87	---	5.75

STYLE 3 - External Hub

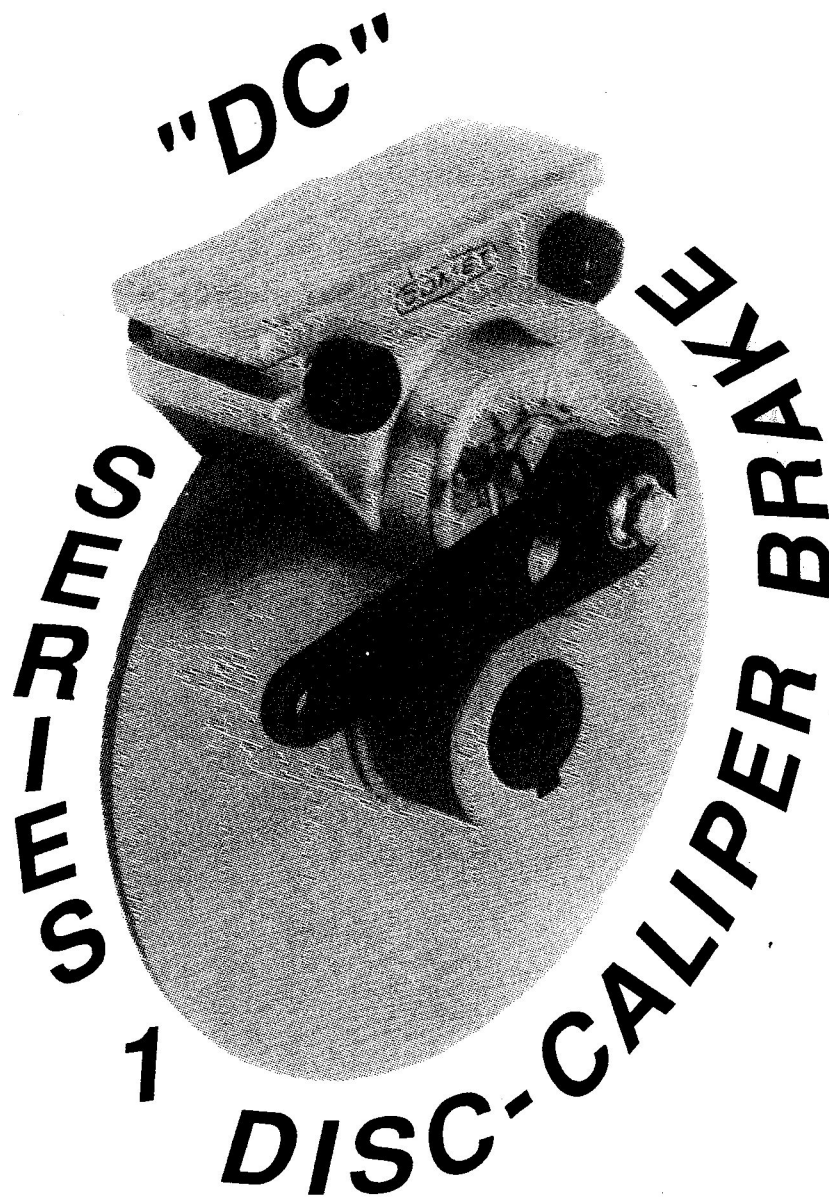
SPECIFICATIONS

ORDER NO.	OUTSIDE DIA. A	WIDTH B	CENTER HOLE DIA. C	KEYWAY D	SET SCREW HOLE *E	WIDTH F	HUB WIDTH G	HUB DIA. H	INSIDE DIA. J
10961A	4.203	2.0	1.0	.1875	2 of 5/16-24	1.125	1.0	1.75	4.0
207505A	4.203	2.0	1.0	.25	2 of 5/16-24	1.125	1.0	1.75	4.0



358 N.W. F Street
(765) 966-8161
(800) 999-8161

Richmond, IN 47374-2297
Fax: (765) 935-2346
[http:// www. hoffcocomet.com](http://www.hoffcocomet.com)

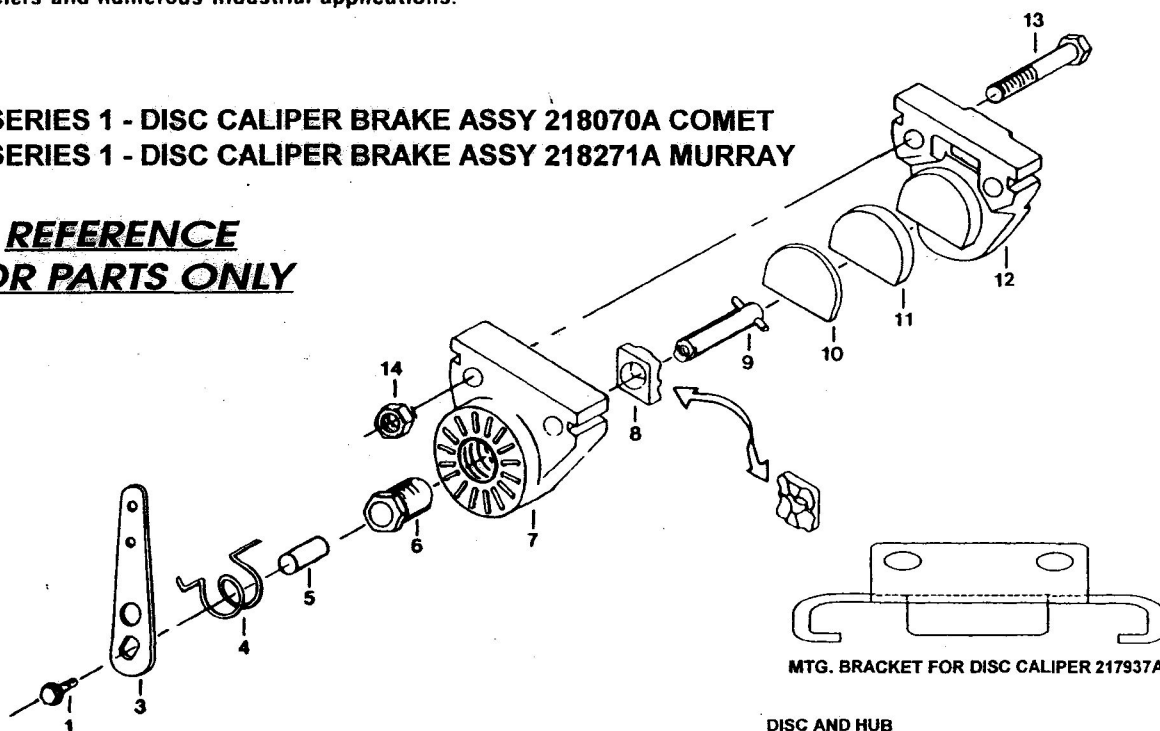


DISC CALIPER BRAKE

- The Comet "DC" Series 1-Disc Caliper, is a direct replacement for comparable brakes of this size.
- This caliper has a total of (8) different lever positions in either direction of pull. (Clockwise/Counter-Clockwise) for a total of 16 positions.
- Integrated in the unique actuator design is a positive stop so that a Return Spring can be used without causing braking in the opposite direction of pull.
- The Brake also has a very simple means of line adjustment via the large Hex Adjusting Barrel controlled by a friction procedure that resists turning.
- The Brake can be floated by using spacers and longer assembly bolts or by using the two convenient slots.
- When this Caliper is used with our Comet Brake Discs you can be assured of quick stopping from the first actuation . . . due to a unique surface process on our discs. The Brake Puck has 1.9 square inches of automotive brake material and is replaceable.
- This Brake is used, or can be used on RV's, Snowmobiles, Go-Karts, Mini-Bikes, Garden Tractors, Three and Four Wheelers and numerous Industrial applications.

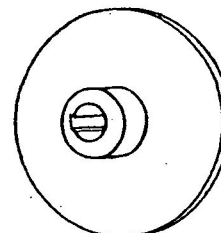
"DC" SERIES 1 - DISC CALIPER BRAKE ASSY 218070A COMET
 "DC" SERIES 1 - DISC CALIPER BRAKE ASSY 218271A MURRAY

REFERENCE FOR PARTS ONLY



ITEM #	ORDER #	DESCRIPTION	QTY. REQ.
1	204855A	Bolt, Wiz Loc Hex Hd., 1/4-20 x 1/2	1
3	211678A	Brake Lever	1
4	212499A	Spring, L.H., Red (Clockwise Rotation)	1
4	212498A	Spring, R.H., Blue (Counter-Clockwise Rotation)	1
4	218016A	Torsion Spring (Murray only)-Not Shown	1
5	212610A	Adjusting Barrel Bushing	1
6	212253A	Adjusting Barrel	1
7	211670A	Caliper Half/Actuator Side	1
8	212104A	Ramp, Actuator	1
9	212106A	Shaft, Actuator	1
10	211673A	Back Up Plate/Actuator Side	1
11	211674A	Puck, Actuator Side	1
12	211680A	Caliper Half w/Puck, Static Side	1
13	211672A	Bolt, Hex Hd., 3/8-24 x 2 (grade 5)	2
13	213985A	Bolt, 3/8-24 x 2 1/2" (Murray only)-Not Shown	1
14	211651A	Nut, Hex Lock 3/8-24	2

DISC AND HUB



PKG. CODE B

ORDER #	DESCRIPTION
212369A	6-3/8" Dia., 1" Bore, 1/4" Keyway w/Set Screw
212364A	7-7/8" Dia., 1" Bore, 1/4" Keyway
212396A	10" Dia., 1" Bore, 1/4" Keyway w/Set Screw
217948A	7-7/8" Dia., 1" Bore, 1/4" Key (Murray)

SET YOUR COMET CALIPER ANY OF 16 DIFFERENT POSITIONS AS FOLLOWS:

- STEP 1:** Remove (2) 3/8-24 x 2" Bolts and Nuts.
- STEP 2:** Remove 1/4-20 x 1/2 Bolt and Washer, and Brake Lever and Return Spring.
- STEP 3: FIGURE 1 - RAMP BLOCK/BRAKE LEVER POSITION**
You can now set your Ramp Block in one of two positions depending on whether you want a 3 or 9 o'clock or a 12 or 6 o'clock Brake Lever Position. Using the indentation for a reference mark, set the Ramp Block as shown for the desired lever position.
- STEP 4: FIGURE2 - LEVER ROTATION**
For desired lever rotation (clockwise/counter-clockwise) set Actuator Shaft and Pin as shown in figure 2.
- STEP 5: FIGURE 3 - REASSEMBLY OF BRAKE LEVER**
Looking at the Lever you will notice a "D" hole which fits over the end of the Actuator Shaft. The Lever can now be positioned in any one of 4 different locations as shown in figure 3. Shown are clockise postions - 12 and 6 o'clock.
- STEP 6:** After selecting lever position, remove lever and install desired rotation spring. Re-install lever in selected position w/no torsional tensionon spring. Install 1/2-20 x 1/2 retainingmbolt and washer. Tighten red spring 2-3 notches counter-clockwise and tighten blue spring 2-3 notches clockwise.
- STEP 7:** Install Actuator Side Backup Plate and Puck. Assemble Caliper Half w/Puck-Static Side, using (2) 3/8-24 x 2 Hex Hd. Bolts and Nuts and tighten. **Brake is now ready for installation.**
- STEP 8: ADJUSTING BRAKE - Loosen set screw.**
With Brake in full "OFF" position, screw Adjusting Barrel in until brake lock-up. Unscrew just enough for free vehicle movement without drag. **Tighten set screw.**
- STEP 9:** If changing rotation from clockwise to counter-clockwise, remove red spring and install blue return spring.

FIGURE 1

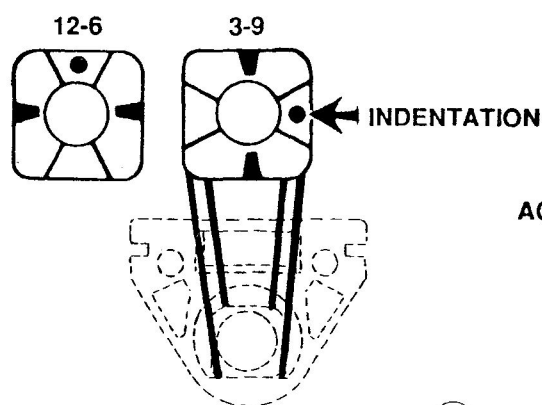


FIGURE 2

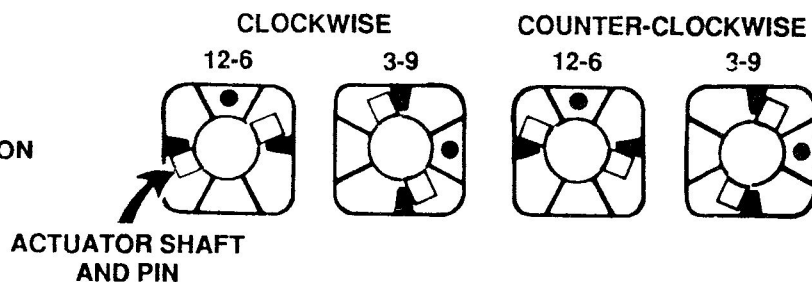
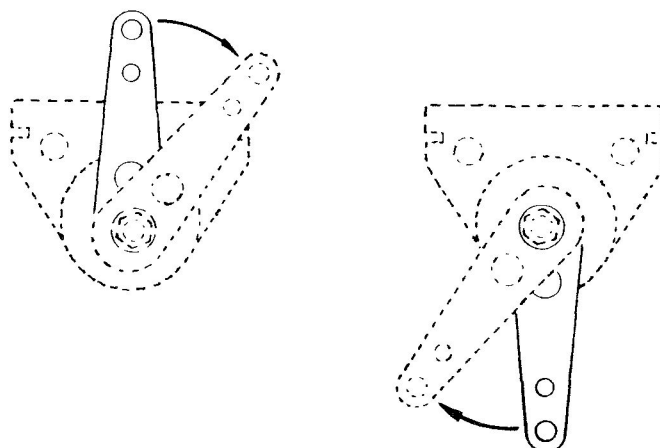


FIGURE 3



GENERAL INFORMATION:

Compact and powerful, the Comet disc brake is constructed of high-strength die cast aluminum and has a rated brake torque of 4800 in. lbs. with 150lbs. of lever pull force applied on a 10" diameter disc. Simplicity of design, the actuator has only one moving part to enable quick and easy adjustments made by tightening the adjusting nut externally of the die cast housing. Quality engineered to exacting standards, the Comet disc brake has 1.8 square inches of automotive type friction material utilized in each puck. Comet's precise, well-machined disk brake caliper delivers vital performance structured for efficiency and reliability.

Minimum maintenance and maximum performance built into the unique design of the Comet disc brake, assures immediate and full control of vehicle speed on changing terrain and travel conditions. Simplistic design reduces complicated adjustments, yet increases performance and durability.

SPECIFICATIONS:

MATERIAL: Housings constructed of high strength die cast aluminum alloy.

ACTUATION: Quick and easy adjustment made by tightening of adjusting nut externally of housing.

DURABILITY: Quality engineered with internal ramp block for maximum puck force & minimum lever travel.

MOUNTING: Unit can be "floated" on stamping type mounting bracket or on bolts provided.

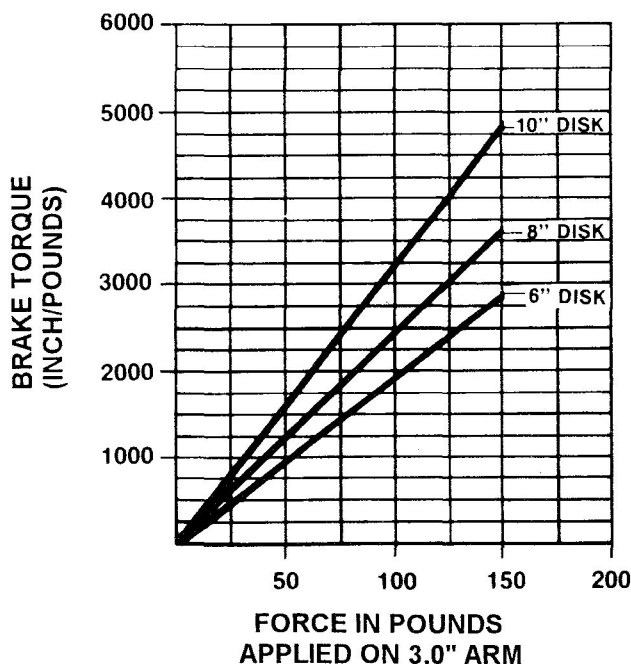
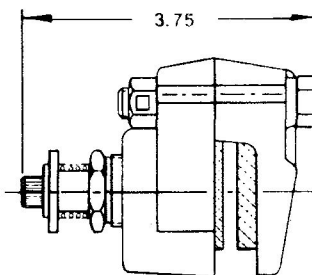
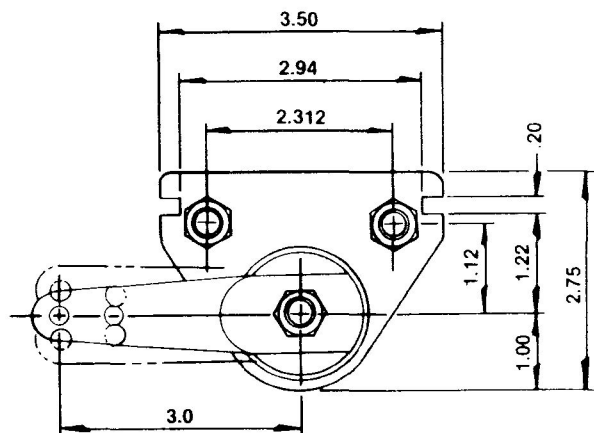
WEIGHT: Lightweight and versatile at 22 oz.

LINING: Non-Asbestos, high friction, non-fading, organic material with exceptional wear characteristics. 1.8 square inches of face area provided per puck.

BRAKE TORQUE: Rates @ 4800 in. lbs. with 150 lbs. of lever pull force applied on a 10" diameter disc.

BRAKE LEVER: Do not exceed 150 lbs. of force.

NOTE: Dimensions and Ratios are in accordance with engineering drawings current with the date shown on this item. Specifications are subject to change without notice.



358 N.W. F Street Richmond, IN 47374-2297
(765) 966-8161 Fax: (765) 935-2346
(800) 999-8161 [http:// www. hoffcocomet.com](http://www.hoffcocomet.com)