



90D & 100D SERIES DRIVEN

APPLICATIONS

**Snowmobiles, Utility Vehicles,
Industrial Equipment, Recreational Vehicles.**

90D & 100D FEATURES

Steel sheaves, adjustable spring tension, replaceable guide buttons, good driven to match up to 102C.

NEW AREA CODE (765) EFFECTIVE 2-1-97

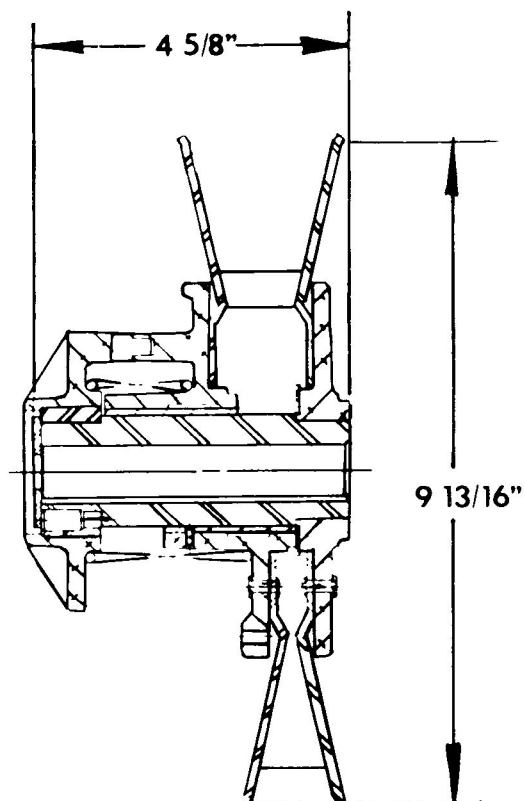
358 NW F Street Richmond, IN 47374-2297 (317) 966-8161 Fax: (317) 935-2346

DIMENSIONAL DRAWING

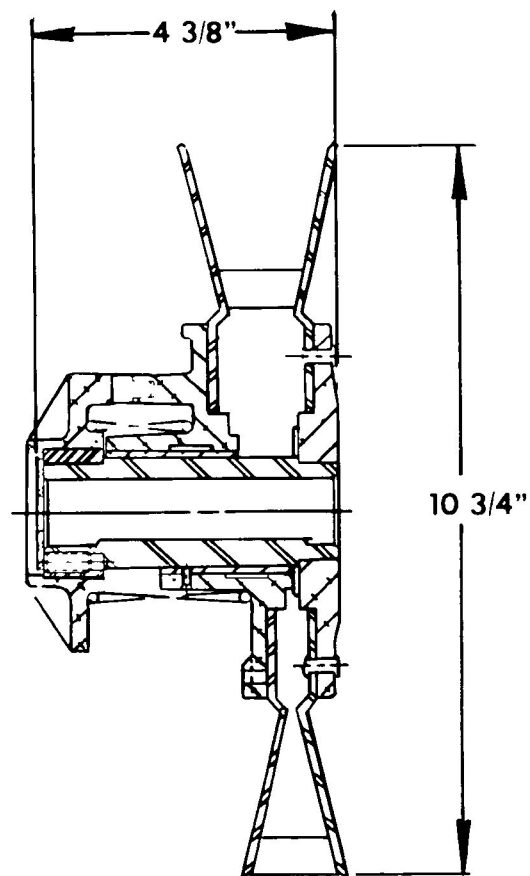


90D & 100D SERIES DRIVEN

90D



100D



MODEL	PART NUMBER	BORE	KEYWAY	BELT TOP WIDTH
90D	212291A	1"	1/4"	1-3/16"
90D	212299A	3/4"	1/4"	1-3/16"
100D	212000A	1"	1/4"	1-1/4"

Torque Converters

90D REDUCTION RATIO with 102C

HIGH SPEED	LOW SPEED
0.78:1	3.28:1
OVERALL SPEED RATIO 4.20:1	

100D REDUCTION RATIO with 102C

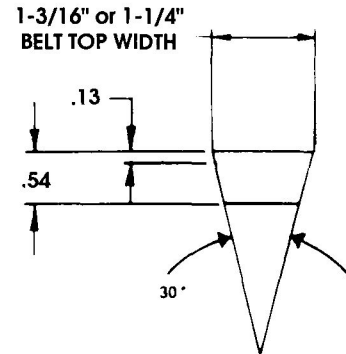
HIGH SPEED	LOW SPEED
0.94:1	3.62:1
OVERALL SPEED RATIO 3.85:1	

90D REDUCTION RATIO with 94C

HIGH SPEED	LOW SPEED
0.82:1	3.61:1
OVERALL SPEED RATIO 4.20:1	

100D REDUCTION RATIO with 94C

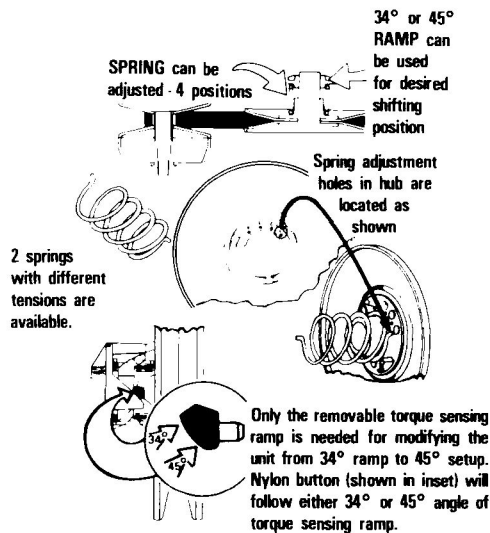
HIGH SPEED	LOW SPEED
1.05:1	3.98:1
OVERALL SPEED RATIO 3.78:1	



BELT
CROSS
SECTION

REFERENCE ONLY

The illustrations shown here are for reference only. They are provided to explain more graphically the modification and adjustment of the Driven unit.



POUNDS OF SPRING TENSION DESIRED	USE SPRING TANG AS SHOWN	ROTATE MOVEABLE SHEAVE AS SHOWN	MOVEABLE SHEAVE WILL SNAP BACK AS SHOWN
*22 LB.	4	160°	120°
*20 LB.	3	160°	120°
*16 LB.	2	130°	90°
*12 LB.	1	130°	90°
* 8 LB.	4	70°	30°
* 6 LB.	3	70°	30°

* This is an approximate measurement of resistance in lbs. of tension that will be realized from the outside radius of the sheave diameter.

ADJUSTING THE SPRING TENSION OF THE DRIVEN UNIT

NOTE: By increasing the spring tension of the torque sensing system . . . the power ratio of the system (Driver and Driven) can be held longer at higher engine r.p.m.'s before it is overcome by the clutch driver.

To shorten the time required for the driven member to attain it's speed ratio, DECREASE the amount of spring tension of the torque sensing cams. This will allow the r.p.m. of the drive clutch to overcome the power ratio of the driven unit at a faster rate in a lower r.p.m. range.

Select the amount of tension desired from the chart.

SPECIFICATIONS

SYSTEM: MODEL 90D and 100D SERIES DRIVEN
MODEL 90D (9-13/16" Dia.) —MODEL 100D (10-3/4" Dia.)

TYPE: SYMMETRICAL

BORE SIZES: 1", 3/4"

DIA.: 9-13/16", 10-3/4"

