

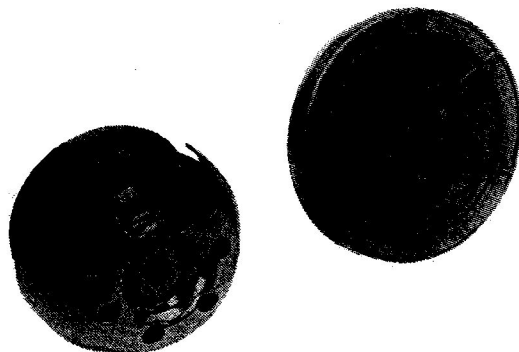
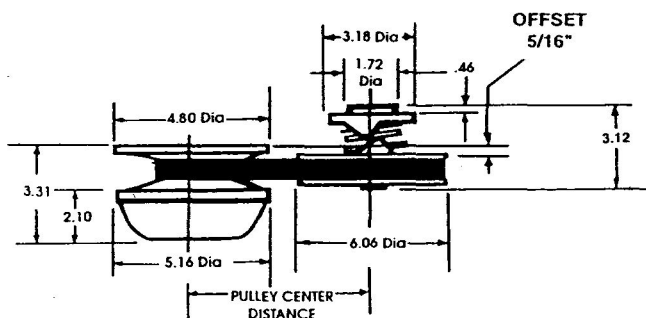
COMET TORQUE CONVERTERS FOR ALL ENGINES THRU 8 H.P.

JR. DRAGSTER, GO KARTS, MINI BIKES

MODEL 340 SERIES (SYMMETRICAL)

GENERAL INFORMATION:

The Model 340 automatic torque converter system was designed specifically for light horsepower applications such as mini-bikes and other lightweight sports vehicles as well as industrial applications. Generally engine driven, this converter is of the torque sensitive type in which the vehicle or driven load has influence on establishing the ratio between the driver and driven. In normal operation, the driver "shifts into high" in response to the engine's increase in speed; the driven follows this speed change as in any variable pitch belt drive. In the torque sensitive design, a cam actuator in the driven reacts to increased torque demands by downshifting without loss of engine r.p.m. In this way, the engine continues to operate at peak power range for all but the most severe loads when it will shift into peak torque range.



SPECIFICATIONS

DRIVING RATIO

2.5:1 at engagement up to 0.8:1
overall ratio 3.16:1

ENGAGEMENT RPM (4-CYCLE)

See Engagement Chart
(Back Page)

MAXIMUM SPEED

8500 r.p.m.

PULLEY DIAMETERS/WEIGHTS

Driver — 4.8" 2-1/2 Lbs.
Driven — 6" 1-3/4 Lbs.

PULLEY BORES - DRIVER & DRIVEN

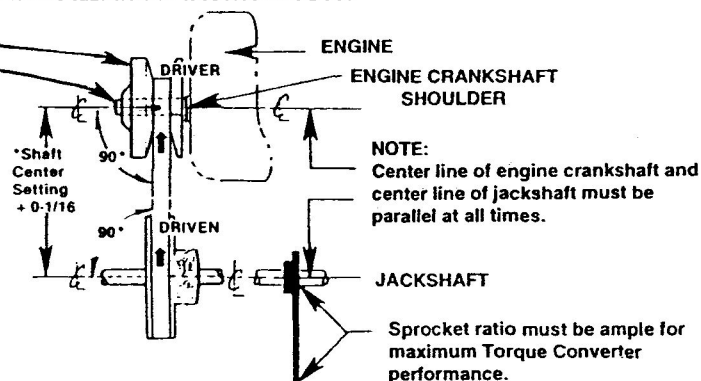
5/8" — 3/4"

MODEL 340 SYSTEM INSTALLATION INSTRUCTIONS

IMPORTANT!

Torque converter DRIVE UNIT MUST NOT FLOAT on engine crankshaft. It must be bolted tight against engine crankshaft shoulder. Recommended Torque for bolt: To 30 ± 5 ft. lbs..

BELT-3/4 TOP WIDTH STANDARD ADJUSTABLE TO RETRO THE 330 SERIES 5/8 TOP WIDTH.



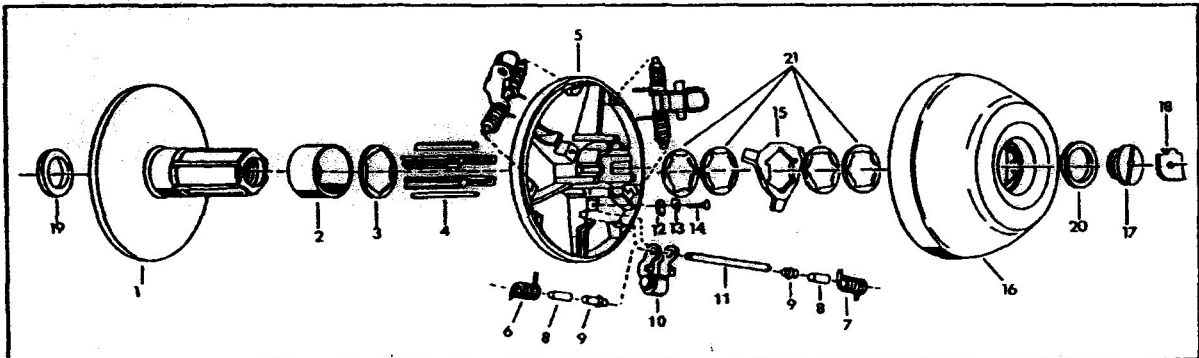
ENGAGEMENT — See Calibration Guide
BELT TOP WIDTH — 3/4 Inches
MAX. PULLEY DIA. — 4.8 Inches
MIN. PULLEY DIA. — 2.24 Inches

MODEL 340 SERIES

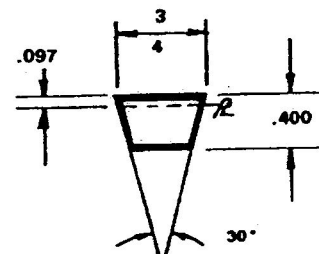
*Drive Clutch less Arms and Springs
 SEE BACK PAGE FOR SELECTION OF ITEMS 6, 7 & 10

302377A 3/4" Bore — 3/16 Keyway

PARTS LIST & ASSEMBLY SEQUENCE



| ITEM | NUMBER | DESCRIPTION | QTY/UNIT |
|------|---------|--|----------|
| 1 | See Kit | Fixed Face & Stem | 1 |
| 2 | 300175A | Idler Bushing | 1 |
| 3 | 300179A | Splined Washer | 1 |
| 4 | 302373A | Spline Liner | 6 |
| 5 | 302362A | Movable Face | 1 |
| 6 | — | R.H. Spring (See Engagement Chart-Back Page) | 3 |
| 8 | See Kit | Bushing Spring | 6 |
| 9 | See Kit | Bushing | 6 |
| 10 | — | Roller Kit (See Engagement Chart-Back Page) | 3 |
| 11 | See Kit | Pivot Pin | 3 |
| 12 | See Kit | Clamp, Pivot Pin | 3 |
| 13 | See Kit | Lock Plate | 3 |
| 14 | See Kit | Screw | 3 |
| 15 | 300876A | Retractor | 1 |
| 16 | 302383A | Ramp Plate | 1 |
| 17 | 302365A | Retainer w/Retainer Spacer | 1 |
| 18 | 300183A | Lock Washer | 1 |
| 19 | 300090A | Spacer, Thrust | 1 |
| 20 | 302361A | Retainer Spacer | 1 |
| 21 | 302359A | Shim | 4 |



TYPICAL BELT
 CROSS SECTION
 REFERENCE ONLY

*See Engagement Chart on Back Page

Pivot Pin Kit
 302203A Includes
 Item # 8-9-11-12-13-14

Spring Bushings
 302253A Includes
 Item # 8-9-13

Fixed Face & Post
 3/4" 302370A
 Item # 1

COMET/SALSBUURY

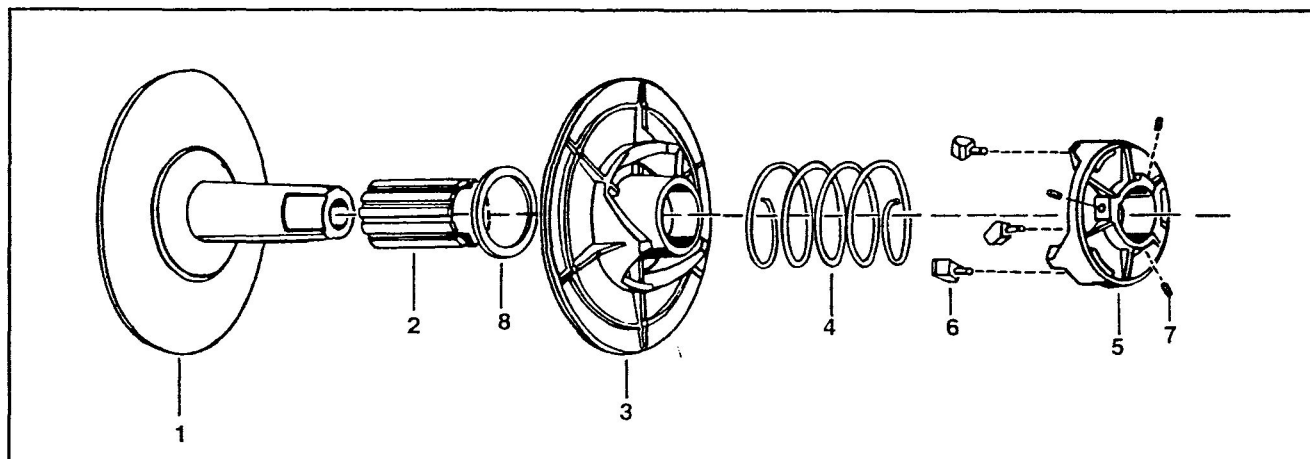
MODEL 340 SERIES

Driven Clutch

BELT TOP WIDTH 3/4 Inches
PULLEY DIA. 6 Inches

302344A 5/8" Bore— 3/16 Keyway
 302345A 3/4" Bore— 3/16 Keyway

PARTS LIST & ASSEMBLY SEQUENCE



| <u>ITEM</u> | <u>PART NUMBER</u> | <u>DESCRIPTION</u> | <u>QTY/UNIT</u> |
|-------------|------------------------|---|-----------------|
| 1 | 300930A | Fixed Face and Post w/Bushing, 5/8" Bore | 1 |
| 1 | 300847A | Fixed Face and Post w/Bushing, 3/4" Bore | 1 |
| 2 | 300240A | Bushing | 1 |
| 3 | 302346A | Moveable Face | 1 |
| 4 | 300234A | Spring, Black | 1 |
| 5 | 302364A | Cam w/Buttons | 1 |
| 6 | 300172A | Buttons | 3 |
| 7 | 214843A | Set Screw, 1/4-20 x 1/2 | 3 |
| 8 | 302347A | Spacer | 1 |

COMET®/SALSBUURY

MODEL 340 DRIVE ENGAGEMENT CHART

The following engagement chart is based on static rotation testing only. In actual selection of components, the weight of the arm relative to the horsepower being transmitted should also be considered.

NOTES: Although different combinations of weights and springs might result in the same engagement RPM, the heavier weights and stronger springs cause quicker upshifts (lower RPM) and slower backshifts (lower RPM).

| SPRING KITS | | ROLLER KITS | | | | | | |
|-------------|--------|---|--|---|---|--|------|------|
| | | BLACK w/Alum. Bushing w/Red Alum.Rivet 301031A 27 GRAMS | BLACK w/Steel Bushing w/Plain Steel Rivet 300114A 35 GRAMS | PINK w/Steel Bushing w/Plain Steel Rivet 300127A 41 GRAMS | ORANGE w/Steel Bushing w/Plain Steel Rivet 300126A 46 GRAMS | GREEN w/Steel Bushing w/Plain Steel Rivet 301330A 55 GRAMS | | |
| PART NO. | COLOR | 302221A | BLACK | 2800 | 2300 | 2200 | 1900 | 1700 |
| 302222A | PINK | 4000 | 3300 | 3200 | 2700 | 2400 | | |
| 302223A | GOLD | 4300 | 3500 | 3400 | 2900 | 2600 | | |
| 302225A | PURPLE | 4900 | 4000 | 3900 | 3400 | 3000 | | |
| 302224A | BLUE | 5600 | 4600 | 4500 | 3800 | 3500 | | |

MODEL 340 DRIVER/340 DRIVEN RECOMMENDED BELT SPECIFICATIONS

| COMET ORDER NO. | CENTER DISTANCE SETTING | APPROX. BELT O.C. |
|--------------------|----------------------------|----------------------|
| 203578A | 6 15/16 - 7 | 27.36 |
| 203579A | 7 1/8 - 7 3/16 | 28.32 |
| 203580A | 7 9/16 - 7 5/8 | 29.28 |
| 203581A | 8 3/16 - 8 1/4 | 30.25 |
| 203582A | 8 11/16 - 8 3/4 | 31.23 |
| 203583A | 9 3/16 - 9 1/4 | 32.20 |
| 203584A | 9 5/8 - 9 11/16 | 33.18 |
| 203585A | 9 15/16 - 10 | 33.78 |
| 203586A | 10 3/4 - 10 13/16 | 35.14 |
| 203587A | 11 11/16 - 11 3/4 | 37.11 |
| 203588A | 13 1/16 - 13 1/8 | 39.77 |