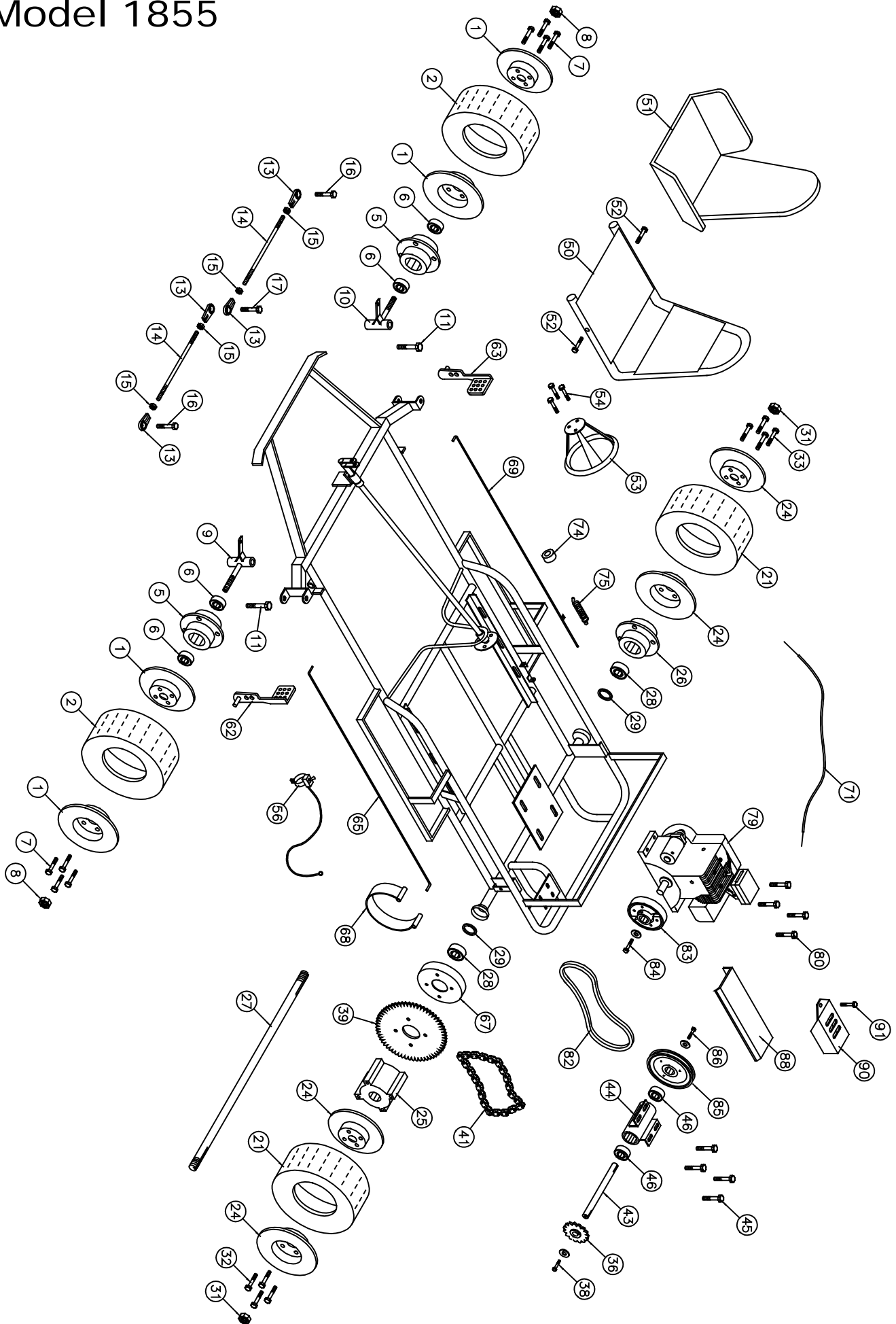


# Model 1855



# Mini-Indy

By Carter

## Go-Kart Parts List - Model 1855

No	Partno	Description	Qty	No	Partno	Description	Qty
<b>Front Wheel Section</b>				(43)	G-568	Jack shaft (3/4" x 10 13/16")	1
(1)	G-344	Split rim wheel 6" Medium (Set)	2	(44)	G-569	Jack Shaft Housing (1 5/8" x 9") (bolts underneath the Jack Shaft plate)	1
(2)	G-244	Tire & Tube Assembly (13 x 5.00 x 6")	2	(45)	F-951	Bolt 5/16" x 1" w/(2) F.W., L.W. & H.Nut	4
(3A)	G-245	Tire (13 x 5.00 x 6") <b>(N.S.)</b>	2	(46)	G-903	Bearing (1 5/8" OD x 3/4" ID)	2
(3B)	G-332	Tire (12 x 6.00 x 6") Optional Slicks <b>(N.S.)</b>	2	<b>Frame Section</b>			
(4)	G-246	Tube (13 x 5.00 x 6") <b>(N.S.)</b>	2	(50)	G-629-02	Metal Seat #4	1
(5)	G-216	Flange hub ( 1 3/8" bore)	2	(51)	G-656	Cushion seat #4	1
(6)	G-204	Bearing (1 3/8" OD x 5/8" ID)	4	(52)	F-958	Bolt 5/16" x 1 1/2" w/ F.W., L.W. & H.Nut	2
(7)	F-962	Bolt 3/8" x 3/4" w/Lock washer	8	(53)	G-647	Steering Wheel 10" (Deep Dish)	1
(8)	F-328	Lock nut 5/8"	2	(54)	F-924	Bolt 1/4" x 3/4" w/L.W. & H.Nut	3
(9)	G-227	Spindle (left)	1	(55)	I-229	Cable tie <b>(N.S.)</b>	1
(10)	G-228	Spindle (right)	1	(56)	G-642	Toggle Kill Switch w/ wire (48")	1
(11)	F-996	King pin bolt (1/2" x 3 3/4" w/F.W. & L.Nut)	2	<b>Throttle &amp; Brake Section</b>			
(12)	I-215	Grease fitting 1/4" (Spindles) <b>(N.S.)</b>	2	(62)	G-433	Brake pedal	1
(13)	G-207	Tie rod bearing 3/8"	4	(63)	G-434	Gas pedal	1
(14)	G-236	Tie rod 3/8" x 11 3/8"	2	(64)	F-504	Cotter Pin 1/8" x 1" <b>(N.S.)</b>	4
(15)	F-309	Nut 3/8" (Fine thread)	4	(65)	G-468	Brake rod #5B	1
(16)	F-949	Bolt 3/8" x 1 1/4" w/F.W. & L.Nut	2	(67)	G-428	Brake drum	1
(17)	F-948	Bolt 3/8" x 2" bolt w/(3)F.W. & (1)L.Nut	1	(68)	G-449	Brake band	1
<b>Rear Wheel Section</b>				(69)	G-474	Throttle rod #11T	1
(21)	G-244	Tire & tube assembly (13 x 5.00 x 6")	2	(70)	F-904	Bolt 5/16" x 3/4" w/ F.W., L.W. & H.Nut <b>(N.S.)</b>	1
(22A)	G-245	Tire (13 x 5.00 x 6") <b>(N.S.)</b>	2	(71)	G-489	Throttle Wire & conduit (37" Wire)	1
(22B)	G-332	Tire (12 x 6.00 x 6") Optional Slicks <b>(N.S.)</b>	2	(72)	G-418	Conduit clip <b>(N.S.)</b>	1
(23)	G-246	Tube (13 x 5.00 x 6") <b>(N.S.)</b>	2	(73)	F-935	Bolt 3/16" x 3/4" w/L.W. & H.Nut <b>(N.S.)</b>	1
(24)	G-344	Split rim wheel 6" Medium (Set)	2	(74)	G-408	Lock collar 3/8"	1
(25)	G-308	Drive hub 3/4" bore	1	(75)	I-205	Spring	1
(26)	G-310	Flange hub 3/4" bore	1	<b>Engine Section</b>			
(27)	G-314	Axle 3/4" x 38 1/4"	1	(79)	E-104	Briggs & Stratton 5 hp Engine (136212)	1
(28)	G-903	Bearing (1 5/8" OD x 3/4" ID)	2	(80)	F-970	Bolt 5/16" x 1 3/4" w/F.W., L.W. & H.Nut	4
(29)	G-237	Wear Ring 3/4"	2	(82)	G-755	V-Belt (5L 300)	1
(30)	I-112	Key 3/16" x 2 3/4" <b>(N.S.)</b>	2	(83)	G-704	Centrifugal Belt Clutch	1
(31)	F-330	Lock nut 3/4"	2	(84)	F-942	Bolt 5/16" x 3/4" NF w/F.W. & L.W.	1
(32)	F-947	Bolt 3/8" x 1" w/Lock washer	4	(85)	G-566	Pulley (B) 5 3/4" w/ 3/4" Bore	1
(33)	F-962	Bolt 3/8" x 3/4" w/Lock washer	4	(86)	F-967	Bolt 5/16" x 1" w/ L.W.& F.W. <b>(N.S.)</b>	1
<b>Jack Shaft Section</b>				(87)	I-104	Key 3/16" x 1 1/2" <b>(N.S.)</b>	1
(36)	G-501	Sprocket 12T (40B)	1	(88)	G-737	Belt Guard	1
(37)	I-113	Key 3/16" x 7/8" <b>(N.S.)</b>	1	(89)	F-992	Nut 1/4" w/ L.W. <b>(N.S.)</b>	2
(38)	F-967	Bolt 5/16" x 1" w/F.W. & L.W.	1	(90)	G-762	Muffler Guard	1
(39)	G-541	Sprocket 54T (41A)	1	(91)	F-902	Bolt 1/4" x 1/2" w/ L.W.	1
(40)	F-954	Bolt 3/8" x 1 1/4" w/Lock washer <b>(N.S.)</b>	4				
(41)	G-567	Drive Chain #40-62 Pitches	1				
(42)	G-514	Connector Link #40 <b>(N.S.)</b>	1				

Carter Brothers Mfg. Co., Inc. Route 1, Box 42 Brundidge, AL 36010-9148  
 Tele: (334) 735-2301 Fax: (334) 735-3500

**(N.S.) - Not Shown on Drawing**

---

**Carter Brothers Mfg. Co., Inc. Route 1, Box 42 Brundidge, AL 36010-9148**  
Tele: (334) 735-2301 Fax: (334) 735-3500