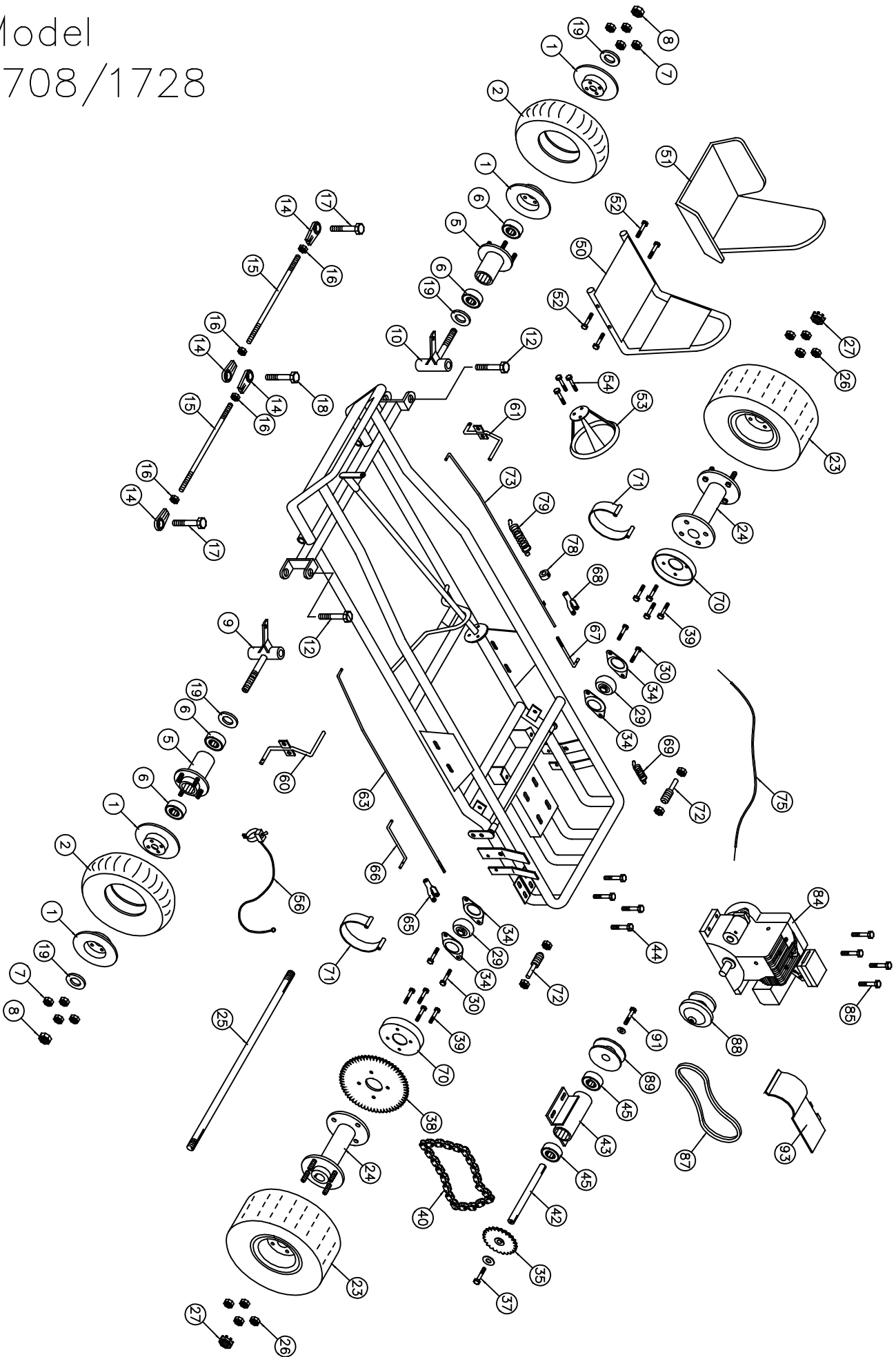


Model  
1708/1728



# Super Wheels®

## Go-Kart Parts List - Model 1708/1728

No.	Partno	Description	Qty	No.	Partno	Description	Qty
<b>Front Wheel Section</b>				(51)	G661	Cushion Seat #10	1
(1)	G251	Split rim wheel 6" (Set)	2	(52)	F970	Bolt 5/16" x 1 3/4" w/F.W., L.W. & H.Nut	4
(2)	G248	Tire & tube assembly (15.0 x 6.00 x 6")	2	(53)	G647	Steering Wheel 10" (Deep dish)	1
(3)	G249	Tire (15.0 x 6.00 x 6") <b>(N.S.)</b>	2	(54)	F924	Bolt 1/4" x 3/4" w/L.W. & H.Nut	3
(4)	G250	Tube (15.0 x 6.00 x 6") <b>(N.S.)</b>	2	(55)	I229	Cable Tie <b>(N.S.)</b>	3
(5)	G264	Steel Flange hub 1 3/8" bore	2	(56)	G642	Toggle Kill Switch w/ wire (48")	1
(6)	G204	Bearing (1 3/8" OD x 5/8" ID)	4	(57)	G102	Flag <b>(N.S.)</b>	1
(7)	F324	Lock Nut 3/8"	8	(58)	G121	Flag holder <b>(N.S.)</b>	1
(8)	F327	Cotter Nut 5/8"	2	<b>Throttle &amp; Brake Section</b>			
(9)	G253	Spindle (left)	1	(60)	G450	Brake Pedal	1
(10)	G254	Spindle (right)	1	(61)	G455	Gas Pedal	1
(11)	G259	Bushings, Bronze 1/2" <b>(N.S.)</b>	4	(62)	F504	Cotter pin 1/8" x 1" <b>(N.S.)</b>	6
(12)	F996	King Pin Bolt (1/2" x 3 3/4" w/ F.W. & L.Nut)	2	(63)	G460	Brake rod #14B	1
(13)	I215	Grease Fitting 1/4" (Spindles) <b>(N.S.)</b>	2	(65)	F510	Clevis pin 5/16"	1
(14)	G257	Tie rod end bearing 3/8" - Heavy Duty	4	(66)	G461	Brake band rod (left)	1
(15)	G267	Tie rod 3/8" x 11 1/8"	2	(67)	G462	Brake band rod (right)	1
(16)	F309	Hex nut 3/8" NF	4	(68)	F511	Clevis pin 3/8"	1
(17)	F949	Bolt 3/8" x 1 1/4" (w/F.W. & L.Nut)	2	(69)	G476	Spring	1
(18)	F948	Bolt 3/8" x 2" w/(3) F.W. & (1) L.Nut	1	(70)	G428	Brake Drum	2
(19)	F430	Flat Washer 5/8"	4	(71)	G449	Brake Band	2
<b>Rear Wheel Section</b>				(72)	F994	Bolt 5/8" x 3" Stud w/ (2) Nut & (1) L.W.	2
(23)	G334	Tire (22 x 11 x 8") Mounted	2	(73)	G456	Throttle Rod #15T	1
(24)	G352	Drive Hub Cast 1" bore w/ 1/4" keyway	2	(74)	F951	Bolt 5/16" x 1" w/(1)F.W.,(1)L.W.& H.Nut <b>(N.S.)</b>	1
(25)	G355	Axle 1" OD x 37" (2 - keyways)	1	(75)	G489	Throttle wire & conduit (37" Wire)	1
(26)	F326	Lock Nut 1/2"	8	(76)	G418	Conduit Clip <b>(N.S.)</b>	1
(27)	F312	Slotted Hex nut 1"	2	(77)	F935	Bolt 3/16" x 3/4" w/L.W. & H.Nut <b>(N.S.)</b>	1
(28)	F507	Cotter pin (5/32" x 2") <b>(N.S.)</b>	2	(78)	G408	Lock Collar 3/8"	1
(29)	G338	Flange bearing (1" I.D. & Flangettes)	2	(79)	I205	Spring	1
(30)	F906	Bolt 5/16" x 1" w/L.W. & Hnut	4	<b>Engine Section</b>			
(31)	I106	Key, Axle 1/4" x 3 1/2" <b>(N.S.)</b>	2	(84A)	E127	B&S 8 HP Engine (190402) <b>1708 ONLY</b>	1
(32)	F805	Bolt 1/2" x 1 1/2" w/ L.W. <b>(N.S.)</b>	8	(84B)	E128	B&S 8 HP Engine ES (190407) <b>1728 ONLY</b>	1
(33)	G724	Spacer 1/4" ID x 1" OD <b>(N.S.)</b>	2	(85)	F970	Bolt 5/16" x 1 3/4" w/ F.W. & L.W. & H.Nut	4
<b>Jack Shaft Section</b>				(86)	G720	Series 40 Torque Converter Comp. <b>(N.S.)</b>	1
(35)	G501	Sprocket 12T(40B) (3/4" bore)	1	(87)	G721	Series 40 Belt	1
(36)	I113	Key 3/16" x 7/8" <b>(N.S.)</b>	1	(88)	G722	Series 40 Driver unit	1
(37)	F967	Bolt 5/16" x 1" w/F.W. & L.W.	2	(89)	G723	Series 40 Driven unit	1
(38)	G541	Sprocket 54T(41A)	1	(90)	F800	Bolt 5/16" x 1 3/4" w/ L.W. & H.N. <b>(N.S.)</b>	2
(39)	F954	Bolt 3/8" x 1 1/4" w/Lwasher	8	(91)	F979	Bolt 7/16" x 2 1/4" NF w/ L.W. & Pilot Washer	1
(40)	G542	Drive chain #40-66 Pitches	1	(92)	I115	Key 3/16" x 3" <b>(N.S.)</b>	1
(41)	G514	Connector link #40 <b>(N.S.)</b>	1	(93)	G725	Belt Guard	1
(42)	G544	Jack Shaft (3/4" x 9 1/2")	1	<b>Electrical Section (N.S.)</b>			
(43)	G545	Jack Shaft Housing (1 5/8" x 5 1/4")	1	(See Electrical Diagram inside paperwork on kart)			
(44)	F807	Bolt 3/8" x 1" w/(2) F.W. & (1) L.Nuts	4	(100)	G107-01	Lite Kit <b>(N.S.)</b>	1
(45)	G903	Bearing (1 5/8" OD x 3/4" ID)	2	(101)	G959	Buss HKP Fuse Holder <b>(N.S.)</b>	1
(46)	G533	Spacer 1/4" <b>(N.S.)</b>	2	(102)	G738	Magneto Switch <b>(N.S.)</b>	1
<b>Frame Section</b>				(103)	G739	Solenoid Switch <b>(N.S.)</b>	1
(50)	G660-01	Metal Seat #6	1	(104)	G740	GT200L Battery <b>(N.S.)</b>	1

**(N.S.) - Not Shown on Drawing**