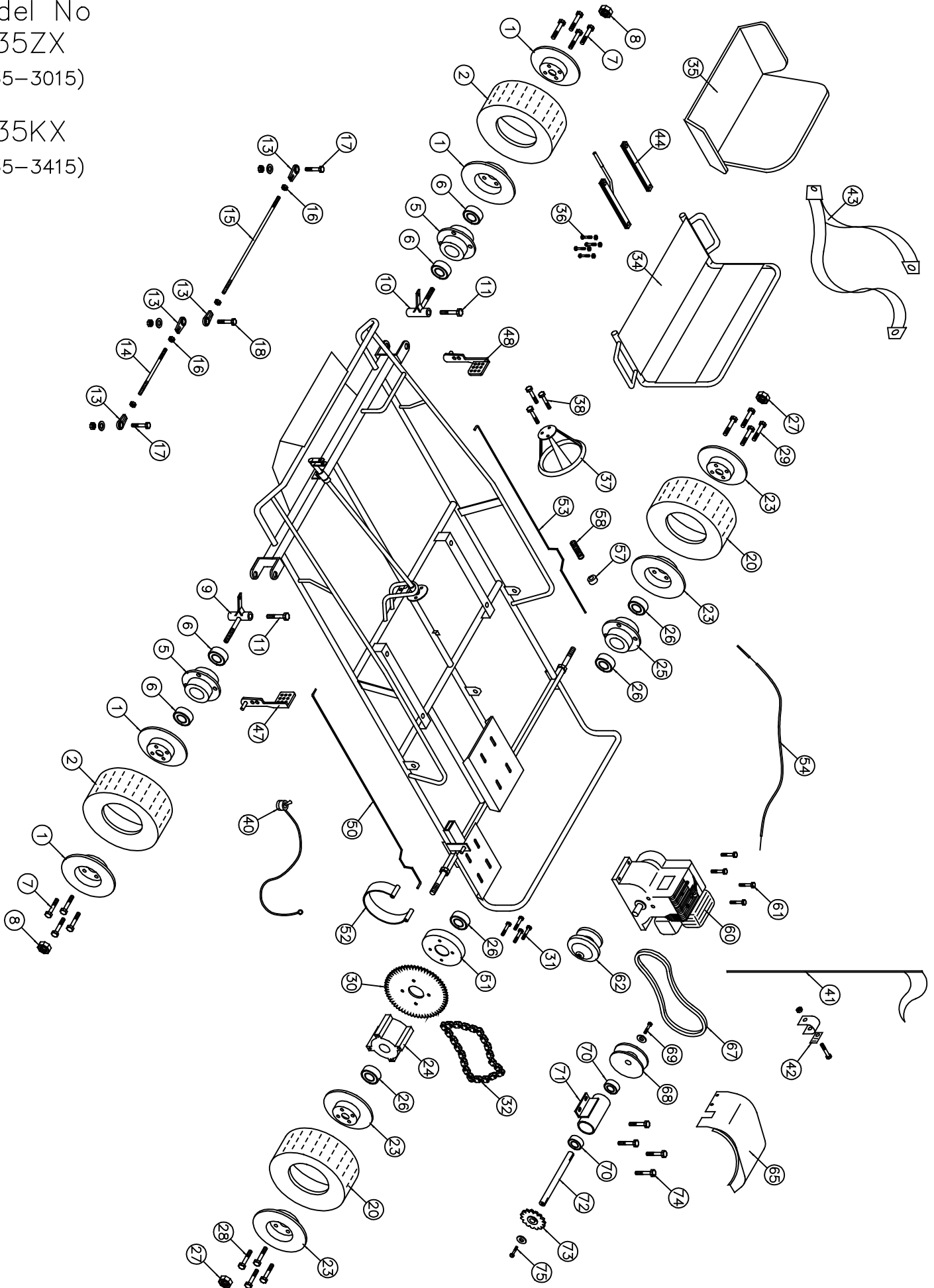


Model No  
2535ZX  
(2535-3015)

2535KX  
(2535-3415)



## Go-Kart Item No 2535-3015, 2535-3415

| No                         | Part No | Description                                | Qty | No                                  | Part No | Description                         | Qty |
|----------------------------|---------|--|-----|-------------------------------------|---------|-------------------------------------|-----|
| <b>Front Wheel Section</b> |         |  |     | (37)                                | G647    | Steering Wheel 10" (Deep Dish)      | 1   |
| (1)                        | G251    | Split rim wheel 6" (Set)                   | 2   | (38)                                | F924    | Bolt 1/4" x 3/4" w/L.W. & Hex Nut   | 3   |
| (2)                        | G276    | Tire & Tube Assembly (14.5 x 7.00 x 6")    | 2   | (39)                                | I229*   | Cable tie                           | 1   |
| (3)                        | G277*   | Tire (14.5 x 7.00 x 6")                    | 2   | (40)                                | G642    | Toggle Kill Switch w/ wire (48")    | 1   |
| (4)                        | G278*   | Tube (14.5 x 7.00 x 6")                    | 2   | (41)                                | G155    | Flag                                | 1   |
| (5)                        | G216    | Flange hub 1 3/8" Bore                     | 2   | (42)                                | G121    | Flag holder                         | 1   |
| (6)                        | G204    | Bearing (1 3/8" OD x 5/8" ID)              | 4   | (43)                                | G695    | Seat Belt 3-Point                   | 2   |
| (7)                        | F962    | Bolt 3/8" x 3/4" (w/Lock Washer)           | 8   | (44)                                | G690    | Seat Adjuster                       | 1   |
| (8)                        | F328    | Lock nut 5/8"                              | 2   | <b>Throttle &amp; Brake Section</b> |         |                                     |     |
| (9)                        | G227    | Spindle (left)                             | 1   | (47)                                | G424    | Brake pedal                         | 1   |
| (10)                       | G228    | Spindle (right)                            | 1   | (48)                                | G425    | Gas pedal                           | 1   |
| (11)                       | F996    | King pin bolt (1/2" x 3 3/4" w/(2)FW & LN) | 2   | (49)                                | F504*   | Cotter Pin (1/8" x 1")              | 4   |
| (12)                       | I215*   | Grease fitting 1/4" (Spindles)             | 2   | (50)                                | G494    | Brake rod #24B (CBC)                | 1   |
| (13)                       | G207    | Tie rod bearing 3/8"                       | 4   | (51)                                | G428    | Brake drum                          | 1   |
| (14)                       | G232    | Tie rod (3/8" x 6")                        | 1   | (52)                                | G449    | Brake band                          | 1   |
| (15)                       | G233    | Tie rod (3/8" x 16 1/2")                   | 1   | (53)                                | G582    | Throttle rod #11T-Z                 | 1   |
| (16)                       | F309    | Hex Nut 3/8" NF                            | 4   | (54)                                | G488    | Throttle wire & conduit (31" Cable) | 1   |
| (17)                       | F949    | Bolt 3/8" x 1 1/4" w/F.W. & Lock Nut       | 2   | (55)                                | G418*   | Conduit Clip                        | 1   |
| (18)                       | F948    | Bolt 3/8" x 2" w/(3)F.W. & (1) Lock Nut    | 1   | (56)                                | F935*   | Bolt 3/16" x 3/4" w/L washer & nut  | 1   |
| <b>Rear Wheel Section</b>  |         |  |     | (57)                                | F252    | Nyloc Nut                           | 1   |
| (20)                       | G276    | Tire & Tube Assembly (14.5 x 7.00 x 6")    | 2   | (58)                                | I206    | Spring                              | 1   |
| (21)                       | G277*   | Tire (14.5 x 7.00 x 6")                    | 2   | <b>Engine/Jack Shaft Section</b>    |         |                                     |     |
| (22)                       | G278*   | Tube (14.5 x 7.00 x 6")                    | 2   | (60)                                | 3130110 | Tecumseh 5hp Engine                 | 1   |
| (23)                       | G251    | Split rim wheel 6" (Set)                   | 2   | (61)                                | F970    | Bolt 5/16" x 1 3/4" w/Flange Nut    | 4   |
| (24)                       | G222    | Drive hub 1 3/8" bore                      | 1   | (62)                                | G704    | Centrifugal Belt Clutch             | 1   |
| (25)                       | G216    | Flange hub 1 3/8" bore                     | 1   | (63)                                | F942*   | Bolt 5/16" x 3/4" NF w/ F.W. & L.W. | 1   |
| (26)                       | G204    | Bearing (1 3/8" OD x 5/8" ID)              | 4   | (64)                                | I104*   | Key 3/16" x 1 1/2"                  | 1   |
| (27)                       | F328    | Lock nut 5/8"                              | 2   | (65)                                | 3371106 | Chain and Belt Guard                | 1   |
| (28)                       | F947    | Bolt 3/8" x 1" w/Lock washer               | 4   | (66)                                | F924*   | Bolt 1/4" x 3/4" w/ L.W. & H.N.     | 2   |
| (29)                       | F962    | Bolt 3/8" x 3/4" w/Lock washer             | 4   | (67)                                | G755    | V-Belt (5L 300)                     | 1   |
| (30)                       | G572    | Sprocket 60T (41A)                         | 1   | (68)                                | G566    | Pulley (B) 5 3/4" w/ 3/4" Bore      | 1   |
| (31)                       | F954    | Bolt 3/8" x 1 1/4" w/ L.W.                 | 4   | (69)                                | F967    | Bolt 5/16" x 1" w/ L.W. & F.W.      | 1   |
| (32)                       | G542    | Drive chain #40-66 Pitches                 | 1   | (70)                                | G903    | Bearing (1 5/8" OD x 3/4" ID)       | 2   |
| (33)                       | G514*   | Connector link #40                         | 1   | (71)                                | G574    | Jack Shaft Housing (1 5/8" x 5")    | 1   |
| <b>Frame Section</b>       |         |  |     | (72)                                | G557    | Jack Shaft (3/4" x 6 7/8")          | 1   |
| (34)                       | G700    | Metal Seat D/S                             | 1   | (73)                                | G501    | Sprocket 12T (40B) w/ 3/4" Bore     | 1   |
| (35)                       | G655    | Seat Cushion #3 (Hot Bodies)               | 1   | (74)                                | F944    | Bolt 3/8" x 1" w/ Flange Nut        | 4   |
| (36)                       | F958    | Bolt 5/16" x 1 1/2" w/ F.W., L.W. & H.Nut  | 2   | (75)                                | F967    | Bolt 5/16" x 1" w/ F.W. & L.W.      | 1   |

\* Not Shown on Drawing