



Look for secret codes throughout for chances to win prizes! Details on Page 2.

# BMI KARTS & EVENT CENTER



**PARTS FOR THOSE WHOM BUILD!**

## STORE & SHOWROOM!

10,000 sqft Store filled with parts, one-of-a-kind items, vehicles and so much more.

## OFF-ROAD KARTS & UTVs!

Tons of units (go-karts, UTVs, mini-bikes) in stock.



**GO KART & MINIBIKE PARTS**



**VINTAGE MOTORCYCLE PARTS**



**OUTDOOR POWER EQUIPMENT PARTS**



**RC VEHICLES & HOBBY SHOP**

## GREAT PRICING!

## FAST SHIPPING!

Most Orders Ship within 24 hrs.

## UP COMING EVENTS

**FEBRUARY 29**  
3:30PM



**JEFF ALLEN**  
(COMEDIAN)

**FEBRUARY 29**  
8:00PM



**PHIL KEAGGY**  
(CONCERT)

**MARCH 07**



**KoЯn's** Brian "Head" Welch & his daughter Jennea

SPEAKING ENGAGEMENT  
& SHOWING OF  
DOCUMENTARY: "LOUD KRAZY LOVE"

**MARCH 14**



**APRIL 4**



**SIGNS OF LIFE**  
THE AMERICAN *Pink Floyd*

**MAY 16**



**JACK RUSSELL'S**  
*Great White*

**MAY 30**



791 E. MAIN ST • VERSAILLES, OH  
937-526-9544

[WWW.BMIKARTS.COM](http://WWW.BMIKARTS.COM)

Mon - Fri: 9:00 am - 5:00 pm • Sat: 9:00 am - 2:00 pm

**SALES • SERVICE • PARTS**

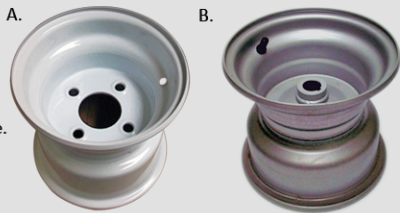




**Build Your Own Tire Assembly**  
**Large Tire**

**Rim Options**  
**(8" Rim)**

- A. White rim with (4) 1/2" bolt holes on a 4" bolt circle.  
B. Gray rim with 1" bore



**20 x 10.00 - 8 | Super Turf Tire**

Description	Part #	Price
Tire .....	260150 .....	\$53.95
Tire w/ Rim "A" .....	260151 .....	\$82.90
Tire w/ Rim "B" .....	02564 .....	\$89.90



**18 x 9.50 - 8 | Turf Tire**

Description	Part #	Price
Tire .....	260111 .....	\$45.00
Tire w/ Rim "A" .....	260112 .....	\$73.95
Tire w/ Rim "B" .....	260113 .....	\$80.95



**18 x 8.50 - 8 | Turf Tire**

Description	Part #	Price
Tire .....	260117 .....	\$40.00
Tire w/ Rim "A" .....	511421 .....	\$68.95
Tire w/ Rim "B" .....	511420 .....	\$75.95



**18 x 9.50 - 8 | Knobby Tire (Carlisle)**

Description	Part #	Price
Tire .....	260032 .....	\$45.95
Tire w/ Rim "A" .....	260018 .....	\$74.90
Tire w/ Rim "B" .....	260034 .....	\$81.90



**18 x 9.50 - 8 | Knobby Tire (Kenda Scorpion)**

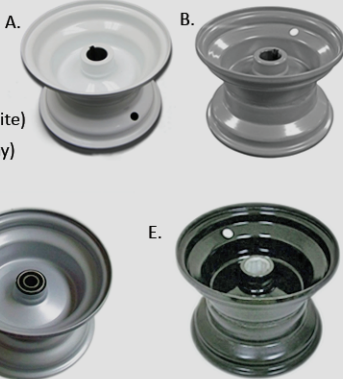
Description	Part #	Price
Tire .....	260032S .....	\$54.95
Tire w/ Rim "A" .....	260018S .....	\$83.90
Tire w/ Rim "B" .....	260034S .....	\$90.90



**Build Your Own Tire Assembly**  
**Small Tire**

**Rim Options (6" Rim)**

- A. Rear Rim with 1" Bore (White)  
B. Rear Rim with 1" Bore (Gray)  
C. Front Rim with 5/8" ID Bearing (White)  
D. Front Rim with 5/8" ID Bearing (Gray)  
E. 7/8" Hex Bore Rim (Black)



**15 x 6.00-6 | Turf Tire**

Description	Part #	Price
Tire .....	260116 .....	\$22.00
Tire w/ Rim "A" .....	260115W .....	\$50.95
Tire w/ Rim "B" .....	260115G .....	\$50.95
Tire w/ Rim "C" .....	260114W .....	\$48.95
Tire w/ Rim "D" .....	260114G .....	\$48.95
Tire w/ Rim "E" .....	260669 .....	\$45.95



**15 x 6.00-6 | Super Turf Tire**

Description	Part #	Price
Tire .....	02451A .....	\$27.00
Tire w/ Rim "A" .....	260046W .....	\$55.95
Tire w/ Rim "B" .....	260046G .....	\$55.95
Tire w/ Rim "C" .....	260045W .....	\$53.95
Tire w/ Rim "D" .....	260045G .....	\$53.95
Tire w/ Rim "E" .....	260666 .....	\$50.95



**145/70-6 | Carlisle Knobby Tire**

Description	Part #	Price
Tire .....	260016 .....	\$19.95
Tire w/ Rim "A" .....	260015W .....	\$48.90
Tire w/ Rim "B" .....	260015G .....	\$48.90
Tire w/ Rim "C" .....	260014W .....	\$46.90
Tire w/ Rim "D" .....	260014G .....	\$46.90
Tire w/ Rim "E" .....	260667 .....	\$43.90



**145/70-6 | Kenda Knobby Tire (Scorpion)**

Description	Part #	Price
Tire .....	260016S .....	\$19.95
Tire w/ Rim "A" .....	268002W .....	\$48.90
Tire w/ Rim "B" .....	268002G .....	\$48.90
Tire w/ Rim "C" .....	268032W .....	\$46.90
Tire w/ Rim "D" .....	268001G .....	\$46.90
Tire w/ Rim "E" .....	260665 .....	\$43.90



**How to enter:**

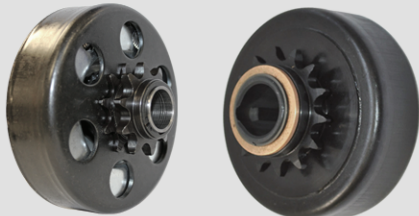
- Find the Secret Code(s) within the paper
- Visit [www.bmikarts.com/win](http://www.bmikarts.com/win)
- Complete the form

**Prizes (examples)**

- \$100 Gift Card To BMI Karts
- Tickets to Upcoming Shows
- RC Car or Truck

Prizes may vary.

**CLUTCHES**



Centrifugal clutch is ideal for everyday demands on popular yard-use go karts, and minibikes. BMI stocks loads of with all kinds options:

- Chain Size: #35 or #40/41
- Engine Shaft Size: 5/8", 3/4" or 1"
- Inboard and Outboard
- Speciality Clutches (Dual Sprocket, Bicycle, or Pulley)
- Name Brands from Comet, Hilliard, Max-Torque and more!

PRICE ..... \$19.95 - \$95.95

- a. Padded Bucket Seat Set (2) for Go Kart
- Back measures 31" H x 17" W (wood back)
  - Base measures 16" D x 16" W (wood base)
  - Overall Dimensions: 33" H x 18" W x 27" D
  - Part # 400549 ..... \$179.95

- b. Double Seat Cushion & Frame with Seat Sliders
- Back measures: 17" H x 36" W (wood back)
  - Base measures: 15-1/2" D x 36" W (wood base)
  - Overall Dimensions: 24" H x 40" W x 20" D
  - Part # 400547 ..... \$119.95

- c. High Back Vinyl Seat - Yerf-Dog
- Back measures 23" H x 29-1/2" W (slip over)
  - Base measures 14-3/4" D x 29" W (wood base)
  - Part # 010005 ..... \$75.00

- d. Seat Cushion & Frame
- Back measures 28" W x 16" H
  - Base measures 28" W x 13" D
  - Part # 400548 ..... \$74.95

- e. Double Vinyl Seat w/ Yerf-Dog Paw Logo
- Back measures 14" H x 24" W (slip over)
  - Base measures 18" D x 27" W (wooden base)
  - Part # 010028 ..... \$75.00

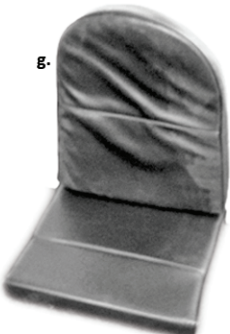
- e. High Back Double Vinyl Seat
- Back measures 27-1/2" H x 19-1/2" W (slip over)
  - Base measures 11-1/2" D x 25-3/4" W (wood base)
  - Part # USA01 ..... \$75.00

- g. Plain Black Vinyl Seat
- Back measures 19" H x 15" W (slip over)
  - Base measures 14" D x 16" W (wooden base)
  - Part # 010009 ..... \$30.00

- h. Double Seat Cushion (1-1/2" Thick Foam)
- Back measures 14" H x 25" W (slip over)
  - Base measures 12" D x 20-1/2" W
  - Side Panels measure 5" W x 13-1/2" L
  - Part # 400541 ..... \$29.95

- i. Seat Cushion
- Back measures 19" H x 16" W (slip over)
  - Base measures 14-1/2" D x 14-1/2" W
  - Part # 400540 ..... \$25.00

- j. Seat Cushion - Child Size
- Back measures 15" H x 12" W (slip over)
  - Base measures 10" D x 11" W
  - Part # 400529 ..... \$24.95





**BMS Ranch Pony 700 EFI UTV**

**Features:**

- Delivered Fully Assembled
- 43 HP EFI Engine
- Fully Automatic
- 4WD-2WD Switchable
- Bluetooth / FM Radio / MP3
- Front Electric Winch
- Easy To Use Dump
- Heavy Duty Front Bumper & Rear Hitch Ball



2 SEAT UTV ..... \$9,299  
4 SEAT UTV ..... \$9,899

**LandStar LS550 4WD UTV**

**Specifications:**

- LandMAXX Engine 479cc, Vanguard Briggs & Stratton
- Speed: UP to 24 mph
- Fuel Consumption: Up to 18 mpg
- Switch engaged on demand, 4 x 4



Color Options: Red, Green, Black, White, or Camo (Camo + \$299)

Starting Price ..... \$6,749.00

*\*UTV Pictured with Optional Accessories Installed*

**TrailMaster Challenger 150X Deluxe UTV**



**Specifications:**

- Max speed: 35 mph
- 150cc 4-stroke,
- Automatic CTV with reverse
- Max load: 500 lbs

Starting at \$3,499!

**LandStar LS350 2WD UTV**

**Specifications:**

- 277cc LandMAXX Commercial Power Engine
- Speed: Up to 22 mph
- Fuel Consumption: Up to 32 mpg
- Range: Up to 100 miles
- Drive: 2 Wheel Drive

Color Options: Red, Green, Black, White, or Camo (Camo + \$299)

Starting at \$4,999!



**Kandi Safari Jeep 200cc**



**Features:**

- Top Speed of 37 MPH
- Electric Start
- Front and Rear Disc Brakes
- Reinforced Steel Framing
- Large Tires

PRICE ..... \$2,895.00

**Tao Tao SnowFox  
GY6 170cc Snowmobile**

**Specs:**

- Engine type: GY6 170cc
- Max speed: 28-31 MPH
- Climb ability: 30°-35°
- Electric and Handle Start
- Caterpillar band overall length: 85"
- Caterpillar band width: 15"
- Press snow depth: 2-3"
- Press snow length: 35"
- Max Load: 330 lbs

Price.... \$2,199<sup>95</sup>



**BMS Sniper T-1500  
Off Road Kart**



**Features:**

Delivered Fully Assembled • 1500cc Dual Overhead Cam 4 Cylinder • 108 HP • 5 Speed Manual w/ Reverse • Full LD Lighting • 4 Nitrogen Shocks • AM/FM Radio • Front 3000 LBS Winch • Rear Tow Hitch • 29" Tires

2 SEAT SNIPER .....\$13,588  
4 SEAT SNIPER .....\$14,995

**BMS V-TWIN Buggy 800 2S  
Off Road Kart**



**Features:**

Delivered Fully Assembled • 794cc V-Twin Cylinder 4 Stroke • CVT Fully Automatic • Top Speed: 60 MPH 4x4 / 4x2 Wheel Drive • Radio + MP3 Player Tow Hitch Ball • Front Winch • Rack Storage • 60 HP

PRICE ..... \$9,999

**BMS Sniper T350  
Off Road Kart**



**Features:**

Delivered Fully Assembled • 311.4cc 4 Stoke Engine 20.4 HP • Fully Automatic • Robust Front Bumper

PRICE ..... \$5,488

**Trailmaster 300 XR & 300 XRS**



**Features:**

- 300cc 4-stroke, single cylinder, water cooled
- Max speed: 50mph
- Electric Start
- Max load: 500 lbs

300XR ..... \$4,399  
300XRS ..... 3,349

**Trailmaster Blazer 150  
2 or 4 Seater Go-Kart**

**Features:**

- 150cc 4-stroke, single cylinder, air cooled
- Max speed: 40 mph
- Electric Start
- Max load: 500 lbs



Blazer150 ..... \$2,599  
Blazer150X ..... 2,999  
Blazer150 (4 SEAT)..... 2,999



**KANDI**

**TAOTAO**



**AMERICAN  
LANDMASTER**

**Trailmaster Mid XR-R  
& Mid XR Electric Go Karts**



**Features:**

Displacement: 200cc • Max: 31mph • Max load: 400 lbs  
Electric Start • Automatic Clutch • Upgraded Suspension  
Speed Control Adjustment • Uses Regular Gas

Mid XR-R ..... \$1,849  
Mid XR Electric ..... 1,699

**Kandi Sandrail Buggy 200cc**



**Features:**

200cc • Max Speed: 45 mph • Comfortable Adjustable Seats • Hydraulic Disk Brakes • Reinforced Steel Framing Front Independent Suspension • Oil Cooling System

KD200GKJ ..... \$2,995

**Kandi 125cc Kids Go Kart**



**Features:**

Speed Governor for Safety • Hydraulic Disk Brakes  
Electric Start Engine • Max Speed 35 MPH  
Automatic Transmission with Reverse

KD125GKM ..... \$1,695

**Trailmaster Mini Bike with Torque Converter**

**Features:**

- Sturdy steel frame
- 200 lbs max load
- Extra wide tires
- 196cc
- Small cargo rack Max Speed: 25 MPH



MB200-2 ..... \$899



## RADIO CONTROLLED FUN!

# TRAXXAS

### Traxxas BigFoot (1/10 Scale, Electric)

- Features:
- 2 or 4-wheel drive
  - RTR
  - Waterproof
  - 30+ MPH
  - Multiple Bodies



Starting at \$199<sup>95</sup>

### HPI Ken Block 1965 Ford Mustang Hoonicorn (1/10, Electric)

- Features:
- 4-wheel drive
  - RTR
  - Waterproof
  - Rally Car Body



Starting at \$299<sup>95</sup>

### Traxxas Ford Mustang GT (1/10, Electric)

- Features:
- 4-wheel drive
  - Waterproof
  - 30+ MPH



Starting at \$259<sup>95</sup>

### TRX-6™ Mercedes-Benz G 63 AMG 6x6 (1/10 Scale, Electric)

- Features:
- Superior 6x6 Design
  - Exceptional Body Detail
  - Factory-Equipped LED Lighting
  - Rigid Steel Frame
  - Ultimate Ground Clearance
  - High/Low Range Transmission
  - Remote Locking Differentials
  - GTS Aluminum Shocks
  - 2.2" Wheels



Starting at \$599<sup>95</sup>

### Traxxas Aton™ Quad-Rotor Helicopter



- Features:
- RTF
  - Powerful Brushless Motors
  - Traxxas Flight Link Ready

Starting at \$299<sup>95</sup>

### Everest Gen7 Sport (1/10 Scale, Electric)



- Features:
- RTR
  - 4-wheel drive
  - Waterproof
  - Real Beadlock Wheels

Starting at \$199<sup>95</sup>

### Ready-To-Fly Planes



Starting at \$129<sup>99</sup>

### Traxxas Racing RC Boats

- Features:
- 24-44" Hull Lengths
  - Up to 50+ MPH
  - Waterproof
  - Scale Detail



Starting at \$149<sup>95</sup>



### Traxxas Slash (1/16 & 1/10 Scale, Electric)

- Features:
- 2 or 4-wheel drive
  - Waterproof
  - 30+ MPH
  - Short Course Racer
  - Huge Variety of Models: Ultimate, Mark Jenkins, Mike Jenkins, Vision, RTR, and More!



Starting at \$169<sup>95</sup>

### Traxxas LaTrax (1/18 Scale, Electric)

RTR: Everything Needed is Included in the Box



- Features:
- 4-Wheel Drive
  - Waterproof
  - 20+ MPH
  - Huge Variety of Colors

Options:  
Teton Monster Truck, Rally Car,  
or Desert Prerunner Truck

Starting at \$109<sup>99</sup>

### Traxxas X-Maxx (1/10 & 1/6 Scale, Electric)

- Specifications:
- 4-wheel drive
  - Waterproof
  - X-Maxx 1/10: 60+ MPH
  - X-Maxx 1/6: 50+ MPH

Starting at \$529<sup>95</sup>



## PERFORMANCE ACCESSORIES & REPLACEMENT PARTS!



### Traxxas Bandit (1/10 Scale, Electric)



- Features:
- 2-Wheel Drive
  - Waterproof
  - 35+ MPH

Options:  
Bandit or Bandit VXL

Starting at \$149<sup>95</sup>

### Traxxas Rustler (1/10 Scale, Electric)



- Features
- 2-Wheel or 4-Wheel Drive
  - Waterproof
  - 35+ MPH

Options:  
Rustler, Rustler VXL, 4x4, or 4x4 VXL

Starting at \$159<sup>95</sup>

### Traxxas Stampede (1/10 Scale, Electric)



- Features
- 2-Wheel or 4-Wheel Drive
  - Waterproof
  - 30+ MPH

Options:  
Stampede, VXL, 4x4, or 4x4 VXL

Starting at \$159<sup>95</sup>





# HUGE SELECTION OF VINTAGE MOTORCYCLE PARTS

**BIG TWIN • SPORTSTERS • 45s • PANHEAD • SHOVELHEAD • KNUCKLEHEAD**



Air Filters • Alternators • Batteries  
Brakes • Cables • Chain • Carriers  
Drivetrain & Transmission • Electrical  
Ignition • Engine Parts • Exhaust  
Frames & Components • Fenders  
Foot Rests • Forks & Frontend • Fuel  
Line • Gas & Oil Tanks • Gauges  
Handlebars • Hardware • Helmets  
Lights • Levers • Kickstands Parts  
Krometts • Mirrors • Pistons • Saddle  
Bags • Seats & Backrests • Shocks  
Sprockets • Tires & Inner Tubes  
Twist Grips & Throttle Sets  
Wheels, Rims, & Spoke Sets

## SAGA Guitar Kits

It's never been easier to build your own electric or acoustic guitar thanks to Saga Guitar Kits! Here is your chance to express yourself by creating a one-of-a-kind masterpiece.



◀ **BUY THIS**



◀ **BUILD THIS**

**STARTING AT \$120.95!**



*Flying V Electric Guitar Kit*

◀ **AVAILABLE ONLY AT BMI**

### TYPES OF KITS AVAILABLE:

ELECTRIC GUITARS  
ELECTRIC BASS  
ACOUSTIC MANDOLIN  
OPENBACK BANJO

## OUTDOOR POWER EQUIPMENT PARTS



### OEM REPLACEMENTS

BRIGGS & STRATTON  
CRAFTSMAN  
CUB CADET • DIXON  
ECHO • GENERAC  
GRASSHOPPER  
HONDA • HUSQVARNA  
JOHN DEERE  
KOBATA • MTD  
MURRAY • SNAPPER  
STIHL • TORO  
TROY-BUILT & MORE!

**OVER 16,000 PARTS AVAILABLE**

**AUTOGRAPHED GUITARS!**



BMI has a collection of autographed guitars, many of which performed at BMI Event Center! These one of kind collector items include Bret Michaels, Scott Stapp, Queensrÿche, Phil Keaggy, Yngwie Malmsteen, Liliac, Candlebox and many more!





791 E. MAIN ST • VERSAILLES, OH  
937-526-9544  
WWW.BMIKARTS.COM



**FEBRUARY 29**  
3:30PM

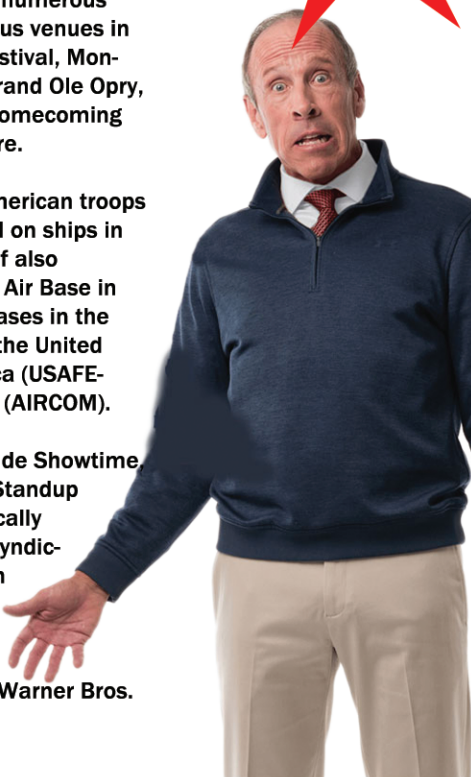
## JEFF ALLEN

C O M E D I A N

A live comedy favorite, Jeff has headlined numerous tours and performed at the most prestigious venues in the world, including the Aspen Comedy Festival, Montreal's Just for Laughs Comedy Festival, Grand Ole Opry, National Prayer Breakfast, Bill Gaither's Homecoming tours, a Presidential Inauguration and more.

In addition, Jeff has also performed for American troops around the world, including in Bahrain and on ships in the Persian Gulf and the Indian Ocean. Jeff also performed for the troops on the Ramstein Air Base in Germany, which is one of the largest air bases in the world and serves as the headquarters for the United States Air Force in Europe, Air Forces Africa (USAFE-AFACRICA) and NATO Allied Air Command (AIRCOM).

His extensive television appearances include Showtime, Comedy Central's Premium Blend, VH1's Standup Spotlight and more. He starred in the critically acclaimed film, Apostles of Comedy, the syndicated comedy series, Bananas, and his own Odyssey Channel/FamilyNet one-hour comedy special, Happy Wife, Happy Life, which was also the title of his PAX TV sitcom pilot. Jeff was also featured in the Warner Bros. comedy film, Thou Shalt Laugh.



**FEBRUARY 29**  
8:00PM

## PHIL KEAGGY

C O N C E R T

Phil Keaggy is perhaps one of the most admired guitarists in music today. His fans range from those who aspire just to be able to play Keaggy's mistakes, to professional musicians who have been strongly influenced by his style. And in between are those who don't play guitar, yet find solace in his beautifully penned lyrics and memorable melodies.

Phil's solo career has spanned more than 40 years, and has included over 60 solo albums, both vocal and instrumental, 8 releases with his band, Glass Harp, as well as numerous duets and trio albums. One of the most sought after studio guitarists, Phil also continues to sell out concerts all over the United States, with his ever-changing style, ranging from rock-and-roll to fully orchestrated instrumental compositions.

Born on March 23, 1951 in Youngstown, OH, the ninth of ten children, Phil grew up in a home filled with music. On Phil's 10th birthday, his brother, Dave returned home with a Sears Silvertone guitar. That's when the magic began.



In 1970, when Phil's band Glass Harp (with childhood friend John Sferra on drums, and Dan Pecchio on bass) recorded their self-titled first album that people really began to take notice of this incredibly gifted guitar player. Glass Harp gained more popularity in the Ohio area, opening for such bands as the Kinks and Yes, and even performing at the prestigious Carnegie Hall in New York City. Over the next few years, they recorded two more albums entitled "Synergy" and "It Makes Me Glad".

By 1972, Phil saw his life going in a different direction, and made the tough decision to leave Glass Harp and pursue a solo career. His first solo album, "What A Day", was recorded in just a week's time during January 1973. He married his sweetheart Bernadette that summer, and the following year, they moved to Upstate New York and joined a Church community called Love Inn.

During his years there, Phil took a break from recording his own music. It wasn't until three years later in 1976 that Phil would record his second solo album, "Love Broke Thru", which was soon followed by a string of albums, including the acclaimed instrumental album, "The Master And The Musician".

With the Christian Music industry really beginning to grow, Phil won his very first Dove award in 1988 for his instrumental album, "The Wind and the Wheat. Phil's second Dove Award came in 1992 for his Celtic-influenced, "Beyond Nature". Each year from 1998 to 2001, Phil has dominated the "Instrumental Record" category at the Doves, winning for "Invention", "Acoustic Sketches", "Majesty and Wonder", and most recently "Lights of Madrid". For three years in a row, Phil was voted one of the top fingerstyle guitarists by Guitar Player Magazine readers.

*SECRET PRIZE CODE is "ROCK2020"*

These days, Phil Keaggy continues to delight audiences all over the US performing primarily acoustic shows, and occasional concerts with a band. He is aware that God gave him a calling to deliver the Gospel through his music, and for over 40 years, Phil Keaggy has been grateful to do just that, and will hopefully continue to do so for many years to come.

**General Admission: \$20.00 (Plus Taxes and Fees)**  
**Doors open at 6:30 p.m.**  
**Starts at 8:00 p.m.**

### MARCH 7 - Speaking Engagement & Film



Korn's Brian "Head" Welch and daughter Jennea will be taking the stage at BMI on March 7, 2020. They will be speaking and presenting the award winning documentary "Loud Krazy Love". **After the movie, KORN's Brian 'Head' Welch and his daughter Jennea will take the stage and speaking with a Q&A session.**

The documentary, details the harrowing journey of Brian "Head" Welch of Korn and his daughter Jennea growing up together with chaotic courage and unconventional faith. Far beyond a rock doc, this transformative coming-of-age story grapples with teenage depression, the quest for identity, and the hope of a father willing to do anything for the one he loves.

## LOUD KRAZY LOVE

*Thunderous. Angry. Cathartic. The sound Brian Head Welch helped pioneer with KORN in the early '90s provided identity to a generation of misfits and made him a global rock star. Famous, wealthy, and worshiped in the spotlight, an adolescent self-loathing relentlessly haunted him in the shadows—until the day a tiny miracle was born. By the time he walked out on a \$23M record deal in 2005, desperate to kick a devastating crystal meth habit, all he wanted was to become a good father. The truly hard part had just begun.*

LOUD KRAZY LOVE won "Best Feature Doc Audience Award" at the Dallas International Film Festival (beating out 35 other documentaries), was a Grand Jury nominee at the Nashville Film Festival.

In addition to chronicling Brian and Jennea's journey, LOUD KRAZY LOVE also gives exclusive access of Brian on tour and at home, in-depth interviews with him, his family and his bandmates, and two decades worth of never-before-seen material from Brian and his multi-platinum-selling band KORN. Film contains thematic material and may be inappropriate for children under 13.

**General Admission: \$10.00 (Plus Taxes and Fees)**  
**Doors open at 5:00 p.m.**  
**Show starts at 7:00 p.m.**

**COMING SOON**

## Mrs. Coe's Homemade Noodles



### OPEN GYM

BMI Event Center & Speedway will have its facilities open for public use. Visit [www.bmikarts.com](http://www.bmikarts.com) for dates.

Facilities include:

- Basketball (Full Sized Court)
- Pickle ball (2 Courts)





791 E. MAIN ST • VERSAILLES, OH  
937-526-9544  
WWW.BMIKARTS.COM



MARCH 14



**MOLLY HATCHET:**

Named after a famous 17th century axe murderess "hatchet molly" who would behead her lovers with the hand tool Lizzy Borden made famous.

In the early 1970s a new form of music was emerging in the South. A mixture of blues, country, gospel and the English invasion of rock and roll that later was to be coined the phrase "Southern Rock." The music was filled with style and emotion and with bands in the forefront such as the Allman Brothers, Lynyrd Skynyrd and a band from Jacksonville, Florida called Molly Hatchet.

Their self-titled debut album which included Danny Joe Brown, Dave Hlubek, Duane Roland, Steve Holland, Banner Thomas and Bruce Crump in the lineup was released on Epic records in 1978 and reached multi-platinum status as the band established their reputation of working hard, playing tough and living fast through intense touring with such bands as Aerosmith, Bob Seger, The Rolling Stones and many more. In 1979, Flirtin' With Disaster was released and history was in the making.

Molly Hatchet supports tradition that keeps developing the common bond and unity that keeps this style of music alive and well and rest assured Molly Hatchet is a band that is always workin' hard, playin' tough, livin' fast, and still Flirtin' with Disaster!!!

**JOHN CORABI:**

John Corabi is one of the most talented singers and songwriters whether it was with Scream, Motley Crue, or Union. In early 2006 he began writing songs with writers in Nashville for some of the biggest names in country music, and has found time to write several TV show treatments. John released a new album, simply titled "Unplugged" with Rat Pak Records and is currently working on an all new electric album.



**General Admission: \$25.00 (Plus Taxes and Fees)**  
**Doors open at 5:00 p.m.**  
**Show starts at 7:00 p.m.**

MAY 16



**APRIL WINE:**



Canadian Music Hall of Famers APRIL WINE have enjoyed international success since the 1970's. They have released more than 20 albums along the way with platinum selling albums featuring mega-hits like 'Roller', 'I Like to Rock', 'You Could Have Been A Lady' and others. Best known for their international top 40 hit 'Just Between You And Me', an iconic power ballad that made them the very first Canadian band on MTV!

**JACK RUSSELL'S GREAT WHITE:**

Jack Russell was the original lead singer of 80s rock band "Great White", which gained airplay on MTV with music videos for songs like "Once Bitten, Twice Shy".

Jack started touring again as "Jack Russell's Great White" in 2011 to avoid confusion with the still-touring Great White band.

In the summer of 2016, Jack Russell's Great White signed a deal with Frontiers Music, releasing four singles leading up to a 2017 debut album, "He Saw It Comin'."



**General Admission: \$30.00 (Plus Taxes and Fees)**  
**Doors open at 5:00 p.m.**  
**Show starts at 7:00 p.m.**

APRIL 4



# SIGNS OF LIFE

THE AMERICAN

*Pink Floyd*

Signs of Life: The American Pink Floyd faithfully captures the music, emotion and excitement of a Pink Floyd concert. The group features eight incredible musicians and a top-notch production team

dedicated to reproducing the vast and spacious Pink Floyd sound. Arguably one of the best tributes any where, Signs of Life shows feature authentic music, sound effects, lighting and video to recreate the essence of Pink Floyd. Setlists encompass hits and rarities spanning every Floyd album played live with remarkable reverence and power.

Concert-goers will never see the same show twice.



**SIGNS OF LIFE DECLARED "BEST TRIBUTE BAND"**

A TRIBUTE BAND'S WORK IS ADMITTEDLY MORE INTERPRETATIVE THAN CREATIVE, BUT DONE WELL IT CAN ALSO BE A LOT OF FUN. LONG-TIME GENRE VETERAN JON STANKORB'S CURRENT PROJECT, SIGNS OF LIFE, PAYS NEARLY PITCH PERFECT HOMAGE TO PINK FLOYD. IF YOU SQUINT A LITTLE, STANKORB LOOKS VAGUELY LIKE DAVID GILMOUR. MORE TO THE POINT: IF YOU CLOSE YOUR EYES (THOUGH WE DON'T RECOMMEND IT: YOU WOULD MISS THE SPECTACULAR LIGHT SHOW), YOUR EARS MIGHT TELL YOU THAT IT'S 1979.

**General Admission: \$15.00 (Plus Taxes and Fees)**  
**Doors open at 5:00 p.m.**  
**Show starts at 7:00 p.m.**

MAY 30

**MICHAEL SWEET**  
from *Stryper*

**TONY HARNELL**  
from *VINYL*

THE  
**1987**  
TOUR



Plus special guest:

**Morrah Formica**  
from NBC's *The Voice*



- To Hell With The Devil
- Calling On You
- Honestly
- Plus fan-favorites from Michael's ten solo albums & other Stryper classics.

- 10,000 Lovers (In One)
- Everyone's a Star
- Intuition
- as well as select songs from Tony's solo career.

**General Admission: \$20.00 (Plus Taxes and Fees)**  
**Doors open at 5:00 p.m.**  
**Show starts at 7:00 p.m.**





No area venue can match the intimacy of seeing your favorite artists up close and personal like BMI does!



RESTAURANT & BAR



KART & RC SPEEDWAY



FULL COURT BASKETBALL



TWO PICKLE BALL COURTS

**BUILT FOR VERSATILITY!**

## EVENT CALENDAR

**FEB 29**

**JEFF ALLEN** (comedian)

Starts at 3:30

\$20

**FEB 29**

**PHIL KEAGGY** (concert)

Starts at 8:00

\$20

**MAR 07**

**KORN's Brian 'Head' Welch & Daughter Jennea** (speaking & film)

\$10

**MAR 14**

**MOLLY HATCHET & JOHN CORABI**

\$25

**APR 04**

**SIGNS OF LIFE: THE AMERICAN PINK FLOYD**

\$15

BUY BOTH  
SAVE  
\$10

**MAY 16**

**APRIL WINE**

**& JACK RUSSELL'S GREAT WHITE**

\$30

**MAY 30**

**MICHAEL SWEET / TONY HARNELL**

Special Guest: Moriah Formica

\$20

**AUG 15**

**THE GUESS WHO & ORLEANS**

\$40

**SEP 19**

**PURE PRAIRIE LEAGUE**

**& ATLANTA RHYTHM SECTION**

\$30

**VIP PACKAGES • FREE PARKING**

Need Tickets? Visit [www.bmikarts.com/tickets](http://www.bmikarts.com/tickets)

937-526-9544  
791 E. MAIN ST. • VERSAILLES OHIO



**PARTS FOR THOSE WHOM BUILD!**



Look for secret codes throughout for chances to win prizes! Details on Page 2.

Web: [www.bmikarts.com](http://www.bmikarts.com)

Phone: 937-526-9544

Store: 769 E. Main St.  
Versailles, OH

Mon - Fri: 9:00 am - 5:00 pm  
Saturday: 9:00 am - 2:00 pm

