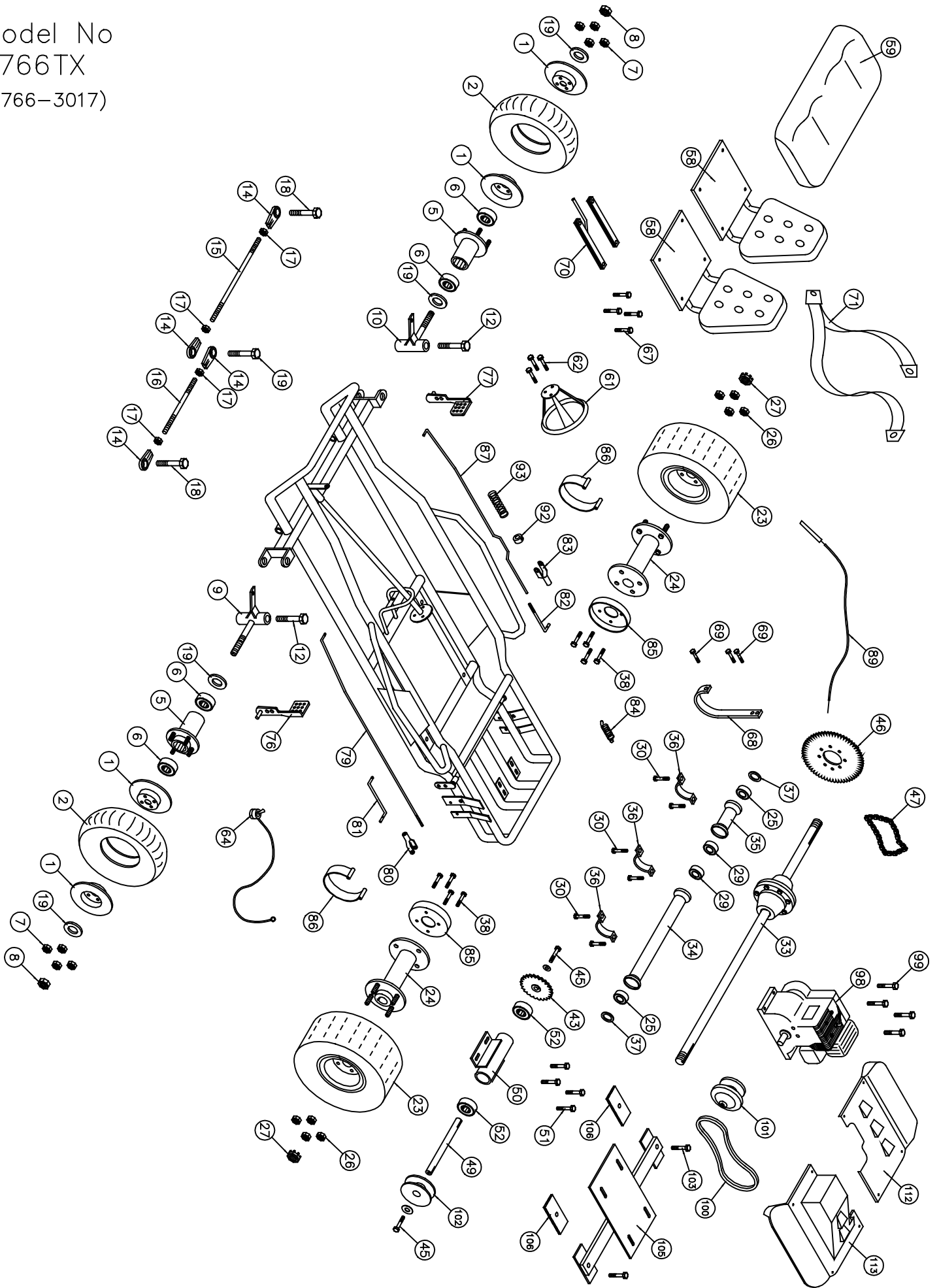


Model No
2766TX
(2766-3017)



Go-Kart Item No 2766-TX

No.	Partno	Description	Qty	No.	Partno	Description	Qty
Front Wheel Section				Frame Section			
(1)	G293	Rim wheel 8"	2	(58)	G696	Seat w/Molded Back	2
(2)	G291	Tire (16 x 650 x 8)	2	(59)	G698	Molded Seat Bottom D/S	1
(5)	G264	Steel Flange hub 1 3/8" bore	2	(61)	G672	Steering Wheel 12"	1
(6)	G204	Bearing (1 3/8" OD x 5/8" ID)	4	(62)	F924	Bolt 1/4" x 3/4" w/L.W. & H.Nut	3
(7)	F982	Bolt 3/8" x 1" w/ L.W. & Hnut	8	(63)	I229*	Cable Tie	3
(8)	F327	Cotter Nut 5/8"	2	(64)	G774	Toggle Kill Switch w/ wire (62")	1
(9)	G287	Spindle (left)	1	(65)	G155*	Flag	1
(10)	G288	Spindle (right)	1	(66)	G121*	Flag holder	1
(11)	G259*	Bushings, Bronze 1/2"	4	(67)	F245	Carriage Bolt 5/16" x 3/4" w/ Cap Nut	4
(12)	F996	King Pin Bolt (1/2" x 3 3/4" w/2FW & LN)	2	(68)	G775	Stump Guard	1
(13)	I215*	Grease Fitting 1/4" (Spindles)	2	(69)	F916	Bolt 5/16" x 3/4" with Lock Nut	4
(14)	G257	Tie rod end bearing 3/8" - Heavy Duty	4	(70)	G690	Seat Adjuster Set	1
(15)	G209	Tie rod 3/8" x 18"	1	(71)	G695	Seat Belt 3-Point	2
(16)	G239	Tie Rod 3/8" x 7"	1	Throttle & Brake Section			
(17)	F309	Hex nut 3/8" NF	4	(76)	3291506	Brake Pedal	1
(18)	F949	Bolt 3/8" x 1 1/4" (w/F.W. & L.Nut)	2	(77)	3291505	Gas Pedal	1
(19)	F948	Bolt 3/8" x 2" w/(3) F.W. & (1) L.Nut	1	(78)	F504*	Cotter pin 1/8" x 1"	6
(20)	F504*	Cotter Pin 1/8" x 1"	2	(79)	G486	Brake Rod #16	1
Rear Wheel Section				(80)	F510	Clevis pin 5/16"	1
(23)	G331	Tire (18 x 9.50 x 8") Mounted	2	(81)	G461	Brake band rod (left)	1
(24)	G352	Drive Hub Cast 1" bore w/ 1/4" keyway	2	(82)	G462	Brake band rod (right)	1
(25)	G904	Bearing M65SRAx64PP	2	(83)	F511	Clevis pin 3/8"	1
(26)	F326	Lock Nut 1/2"	8	(84)	I205	Spring	1
(27)	F312	Slotted Hex nut 1"	2	(85)	G428	Brake Drum	2
(28)	F507*	Cotter pin (5/32" x 2")	2	(86)	G449	Brake Band	2
(29)	G338	Bearing 1" I.D.	2	(87)	G582	Throttle Rod #11TZ	1
(30)	F982	Bolt 3/8" x 1" w/L.W. & Hnut	6	(88)	F951*	Bolt 5/16" x 1" w/(1)F.W.,(1)L.W.& H.Nut	1
(31)	I106*	Key, Axle 1/4" x 3 1/2"	2	(89)	G411	Throttle wire & conduit (40" Wire)	1
(32)	F805*	Bolt 1/2" x 1 1/2" w/ L.W.	8	(90)	G418*	Conduit Clip	1
(33)	G761	Differential Drive Unit	1	(91)	F935*	Bolt 3/16" x 3/4" w/L.W. & H.Nut	1
(34)	G767	Differential Housing (Long)	1	(92)	F252	Nyloc Nut	1
(35)	G768	Differential Housing (Short)	1	(93)	I206	Spring	1
(36)	G769	Differential Straps	3	Engine Section			
(37)	F417	Flat Washer 1/16" x 1"	2	(98)	E138	Tecumseh 6hp Engine w/ Alt	1
(38)	F954	Bolt 3/8" x 1 1/4" w/ L.W.	8	(99)	F970	Bolt 5/16" x 1 3/4" w/ Flange Nut	4
Jack Shaft Section				(100)	G776	Belt S20 884-95DF 203583C	1
(43)	G501	Sprocket 12T(40B) (3/4" bore)	1	(101)	G757	Series 20 Driver unit	1
(44)	I101*	Key 3/16" x 3/4"	1	(102)	G758	Series 20 Driven unit	1
(45)	F967	Bolt 5/16" x 1" w/F.W. & L.W.	2	(103)	F804	Bolt 1/2" x 2 1/2" w/ F.W. & L.N.	2
(46)	G575	Sprocket 54T(40A)	1	(105)	G764	Engine Mount	1
(47)	G576	Drive chain #40-68 Pitches	1	(106)	G765	Engine Mount Pads (3 x 3 1/2" Rubber)	2
(48)	G514*	Connector link #40	1	(111)	G107*	Light Kit Halogen	1
(49)	G577	Jack Shaft (3/4" Dia. w/ 3/16" key)	1	(112)	3371115	Drive Cover (Right)	1
(50)	G578	Jack Shaft Housing (1 1/4" Dia. w/ 1 5/8" cup)	1	(113)	3371116	Drive Cover (Left)	1
(51)	F807	Bolt 3/8" x 1" w/(2) F.W. & (1) L.Nuts	4	(114)	3371142*	Front Guard	1
(52)	G903	Bearing (1 5/8" OD x 3/4" ID)	2	(115)	3371112*	Rear Bumper Guard	1
(54)	I114*	Key 3/16" x 2"	1				

* Not Shown on Drawing