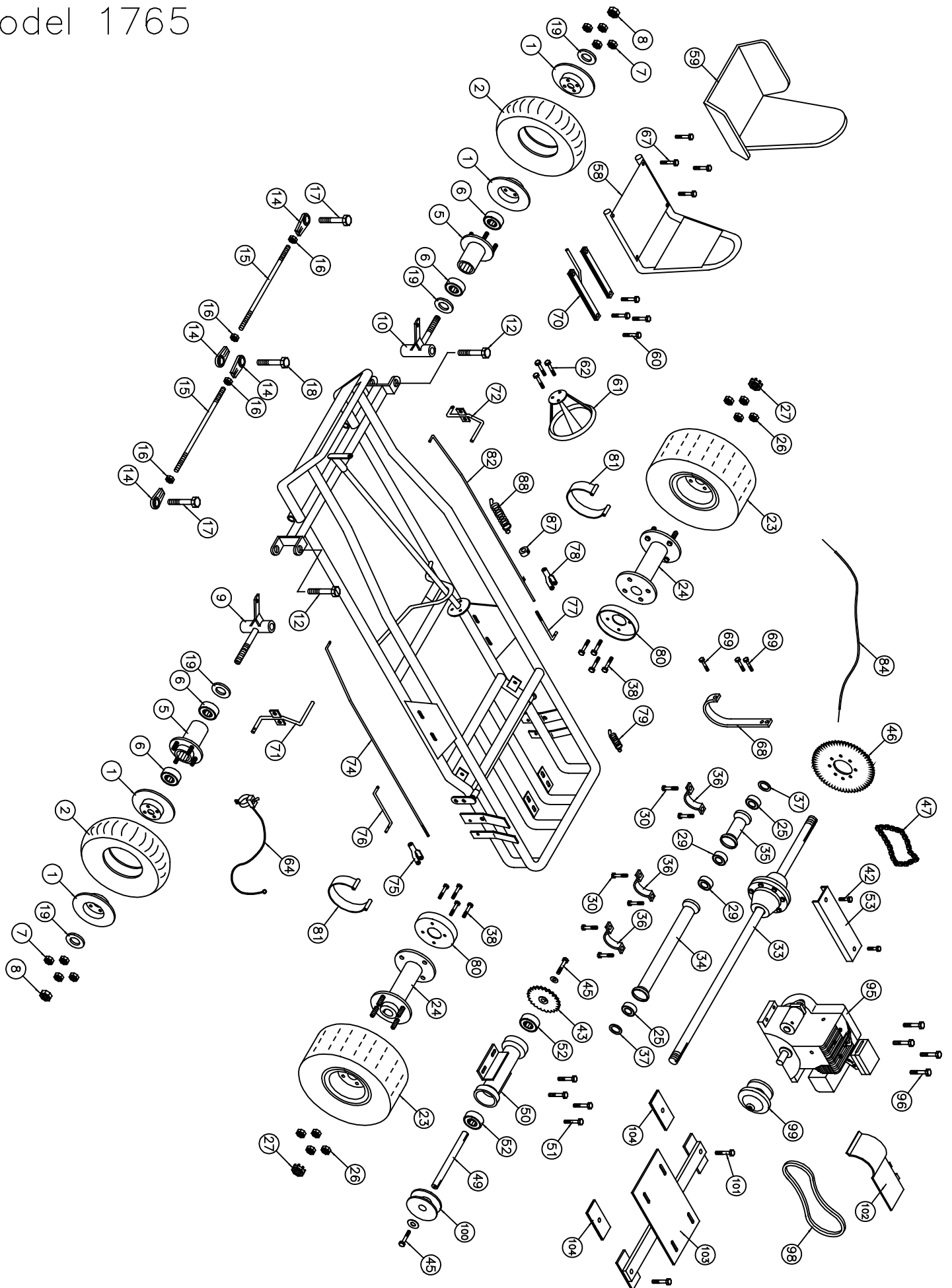


Model 1765



Super Wheels®

Go-Kart Parts List - Model 1765

No.	Partno	Description	Qty	No.	Partno	Description	Qty
Front Wheel Section				(53)	G770	Chain Guard	1
(1)	G251	Split rim wheel 6" (Set)	2	(54)	I114*	Key 3/16" x 2"	1
(2)	G276	Tire & tube assembly (14.5 x 700 x 6)	2	Frame Section			
(3)	G277*	Tire (14.5 x 700 x 6")	2	(57)	G689*	Seat Belt	1
(4)	G278*	Tube (14.5 x 700 x 6")	2	(58)	G674	Metal Seat #8	1
(5)	G264	Steel Flange hub 1 3/8" bore	2	(59)	G661	Cushion Seat #10	1
(6)	G204	Bearing (1 3/8" OD x 5/8" ID)	4	(60)	F904	Bolt 5/16" x 3/4" w/F.W., L.W. & H.N	4
(7)	F982	Bolt 3/8" x 1" w/ L.W. & Hnut	8	(61)	G672	Steering Wheel 12"	1
(8)	F327	Cotter Nut 5/8"	2	(62)	F924	Bolt 1/4" x 3/4" w/L.W. & H.Nut	3
(9)	G772	Spindle (left)	1	(64)	G774	Toggle Kill Switch w/ wire (62")	1
(10)	G773	Spindle (right)	1	(65)	G102*	Flag	1
(11)	G259*	Bushings, Bronze 1/2"	4	(66)	G121*	Flag holder	1
(12)	F996	King Pin Bolt (1/2" x 3 3/4")	2	(67)	F245	Carriage Bolt 5/16" x 3/4" w/ LockNut	4
(14)	G257	Tie rod end bearing 3/8" - Heavy Duty	4	(68)	G775	Stump Guard	1
(15)	G267	Tie rod 3/8" x 11"	2	(69)	F916	Bolt 5/16" x 1" with Lock Nut	4
(16)	F309	Hex nut 3/8" NF	4	(70)	G690	Seat Adjuster Set	1
(17)	F949	Bolt 3/8" x 1 1/4" (w/F.W. & L.Nut)	2	Throttle & Brake Section			
(18)	F948	Bolt 3/8" x 2" w/(3) F.W. & (1) L.Nut	1	(71)	G450	Brake Pedal	1
(19)	F502*	Cotter Pin 1/8" x 1 1/4"	2	(72)	G455	Gas Pedal	1
Rear Wheel Section				(73)	F504*	Cotter pin 1/8" x 1"	8
(23)	G331	Tire (18 x 9.50 x 8") Mounted	2	(74)	G498	Brake rod #26B	1
(24)	G352	Drive Hub Cast 1" bore w/ 1/4" keyway	2	(75)	F510	Clevis pin 5/16"	1
(25)	G904	Bearing M65SRAX64PP	2	(76)	G461	Brake band rod (left)	1
(26)	F326	Lock Nut 1/2"	8	(77)	G462	Brake band rod (right)	1
(27)	F312	Slotted Hex nut 1"	2	(78)	F511	Clevis pin 3/8"	1
(28)	F507*	Cotter pin (5/32" x 2")	2	(79)	G476	Spring	1
(29)	G338	Bearing 1" I.D.	2	(80)	G428	Brake Drum	2
(30)	F982	Bolt 3/8" x 1" w/Lock Nut	6	(81)	G449	Brake Band	2
(31)	I106*	Key, Axle 1/4" x 2 1/4"	2	(82)	G495	Throttle Rod #25T	1
(32)	F805*	Bolt 1/2" x 1 1/2" w/ L.W.	8	(84)	G489	Throttle wire & conduit (37" Wire)	1
(33)	G761	Differential Drive Unit	1	(86)	F935*	Bolt 3/16" x 3/4" w/L.W. & H.Nut	1
(34)	G767	Differential Housing (Long)	1	(87)	F252	Nyloc Nut	1
(35)	G768	Differential Housing (Short)	1	(88)	I206	Spring	1
(36)	G769	Differential Straps	3	Engine Section			
(37)	F417	Flat Washer 1/16" x 1"	2	(95)	E104	Briggs & Stratton 5 HP Engine (136212)	1
(38)	F954	Bolt 3/8" x 1 1/4" w/ L.W.	8	(96)	F995	Bolt 5/16" x 1 3/4" w/ Flange Nut	4
Jack Shaft Section				(98)	G776	Belt S20 884-95DF 203583C	1
(42)	F924	Bolt 1/4" x 3/4" w/ L.W. & Hnut	2	(99)	G757	Series 20 Driver unit	1
(43)	G501	Sprocket 12T(40B) (3/4" bore)	1	(100)	G758	Series 20 Driven unit	1
(44)	I101*	Key 3/16" x 3/4"	1	(101)	F804	Bolt 1/2" x 2 1/2" w/ F.W. & L.N.	2
(45)	F967	Bolt 5/16" x 1" w/F.W. & L.W.	1	(102)	G737	Belt Guard (Plastic)	1
(46)	G575	Sprocket 54T(40A)	1	(103)	G764	Engine Mount	1
(47)	G576	Drive chain #40-68 Pitches	1	(104)	G765	Engine Mount Pads (3 x 3 1/2" Rubber)	2
(49)	G577	Jack Shaft (3/4" Dia. w/ 3/16" key)	1	(105)	A163*	Engine Studs w/ Hex Nuts	2
(50)	G578	Jack Shaft Housing (1 1/4" Dia. w/ 1 5/8" cup)	1	(106)	F961*	Bolt 5/16" x 1 1/4" NF w/ F.W. & L.W.	1
(51)	F807	Bolt 3/8" x 1" w/ Flange Nut	4	(107)	G778*	Guard Bracket	1
(52)	G903	Bearing (1 5/8" OD x 3/4" ID)	2				

* Not Shown on Drawing